

The State of the Region: 2017

CAPCOG General Assembly



December 13, 2017

Chris Schreck,
Director of Planning and Economic Development,
Capital Area Council of Governments

Growth in the Austin MSA Since 2010

Question 1:

About how many people lived in the Austin Metro Area in 1970?

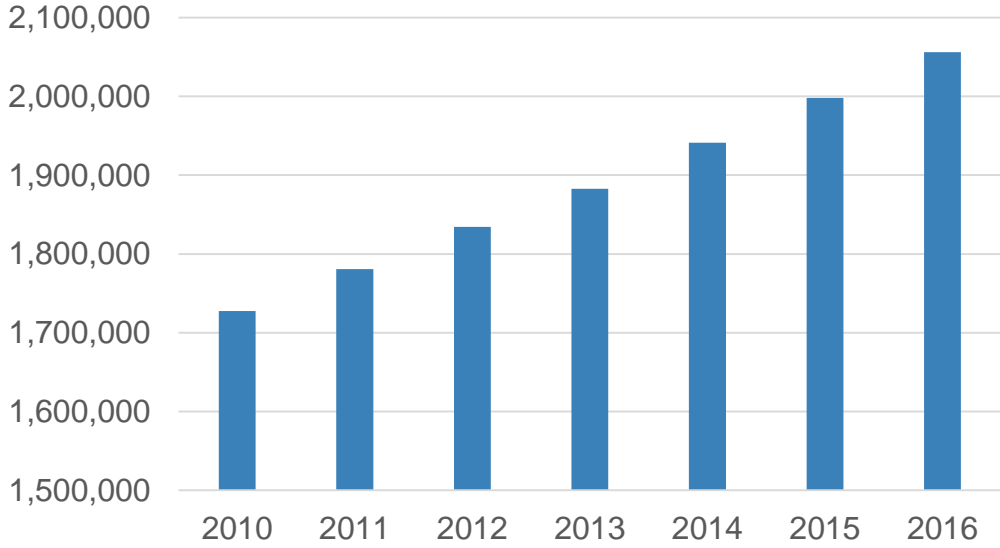
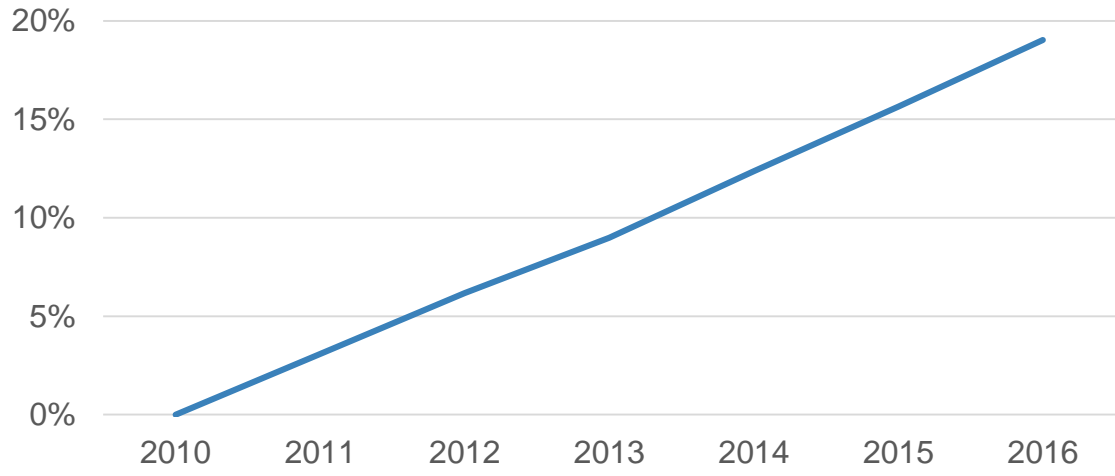
1) 200,000

2) 300,000

3) 400,000

4) 500,000

Growth in the Austin MSA Since 2010

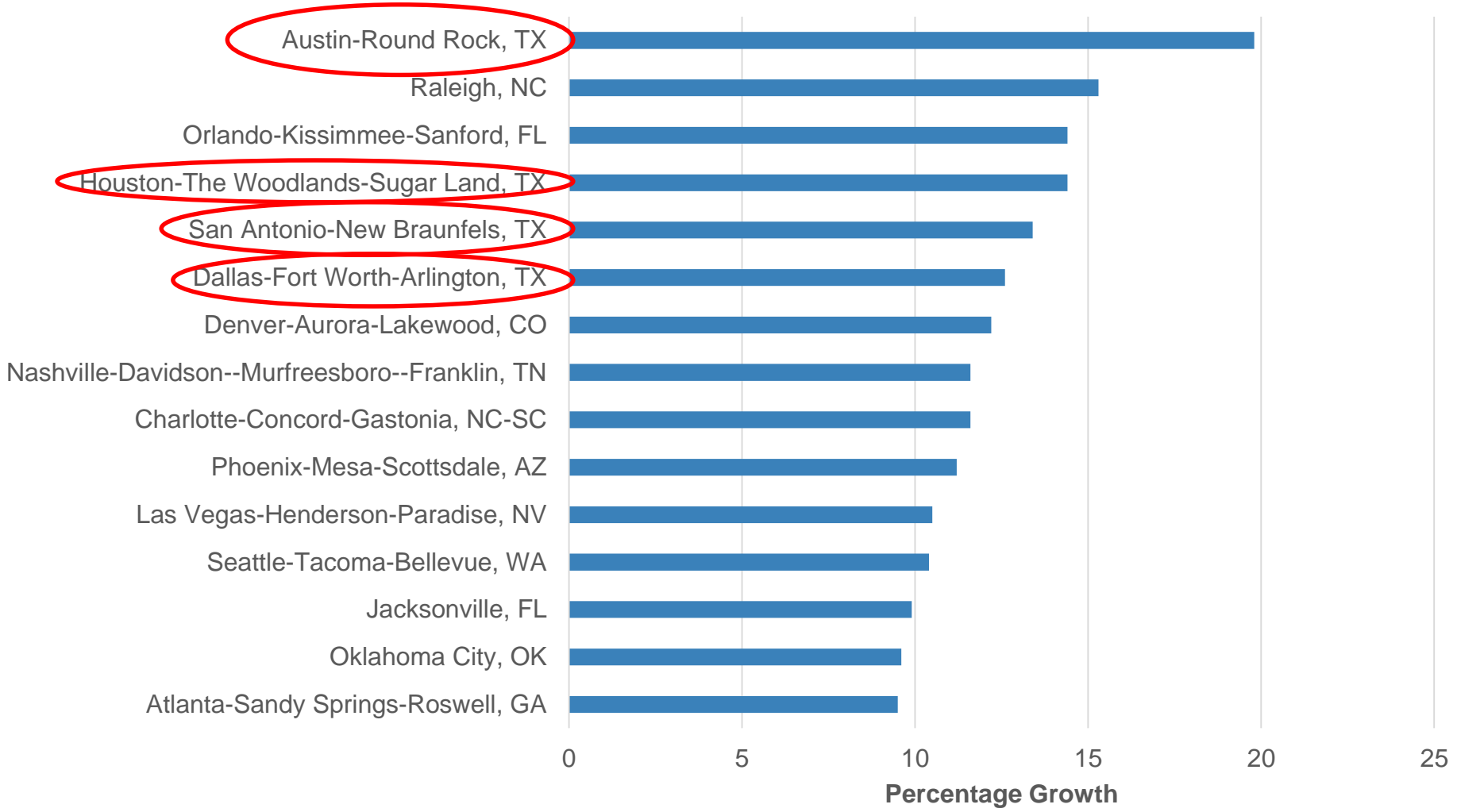


Answer: 3. The population in 1970 was 398,000. We're up over 2 million now.

Source: U.S. Census Bureau

Fast Growing Large Metros

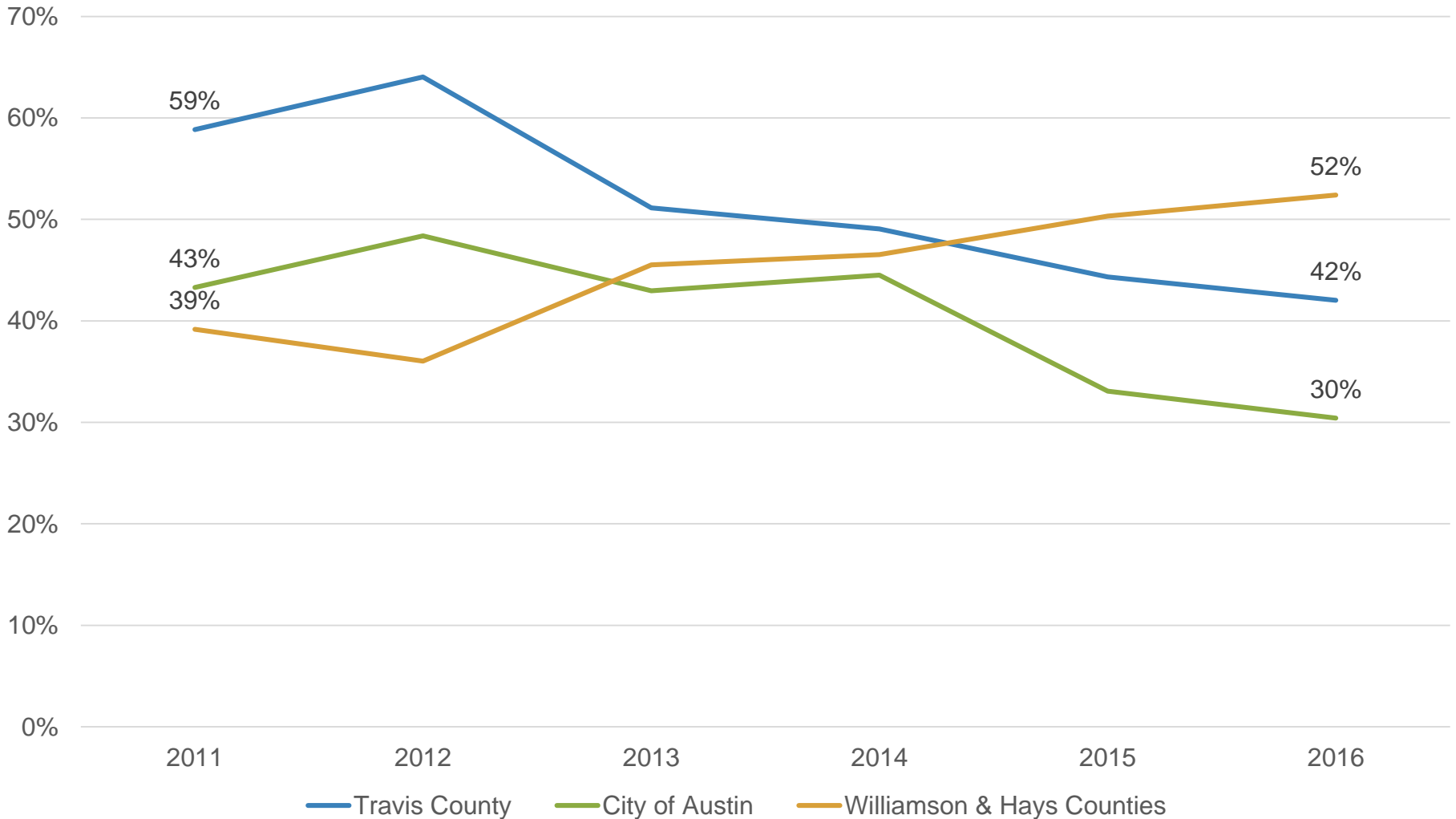
Fastest Growing Large Metros (2010-2016)



Source: U.S. Census Bureau

Austin's Declining Share of Growth

Share of Population Growth (2011-2016)



Source: U.S. Census Bureau

Job Creation in the Austin MSA

Question 2:

Comparing job creation growth rates from October 2016 to October 2017, the Austin MSA ranks where among large metro areas (population over 1 million)?

1) 1st

2) 4th

3) 8th

4) 16th

Job Creation in the Austin MSA

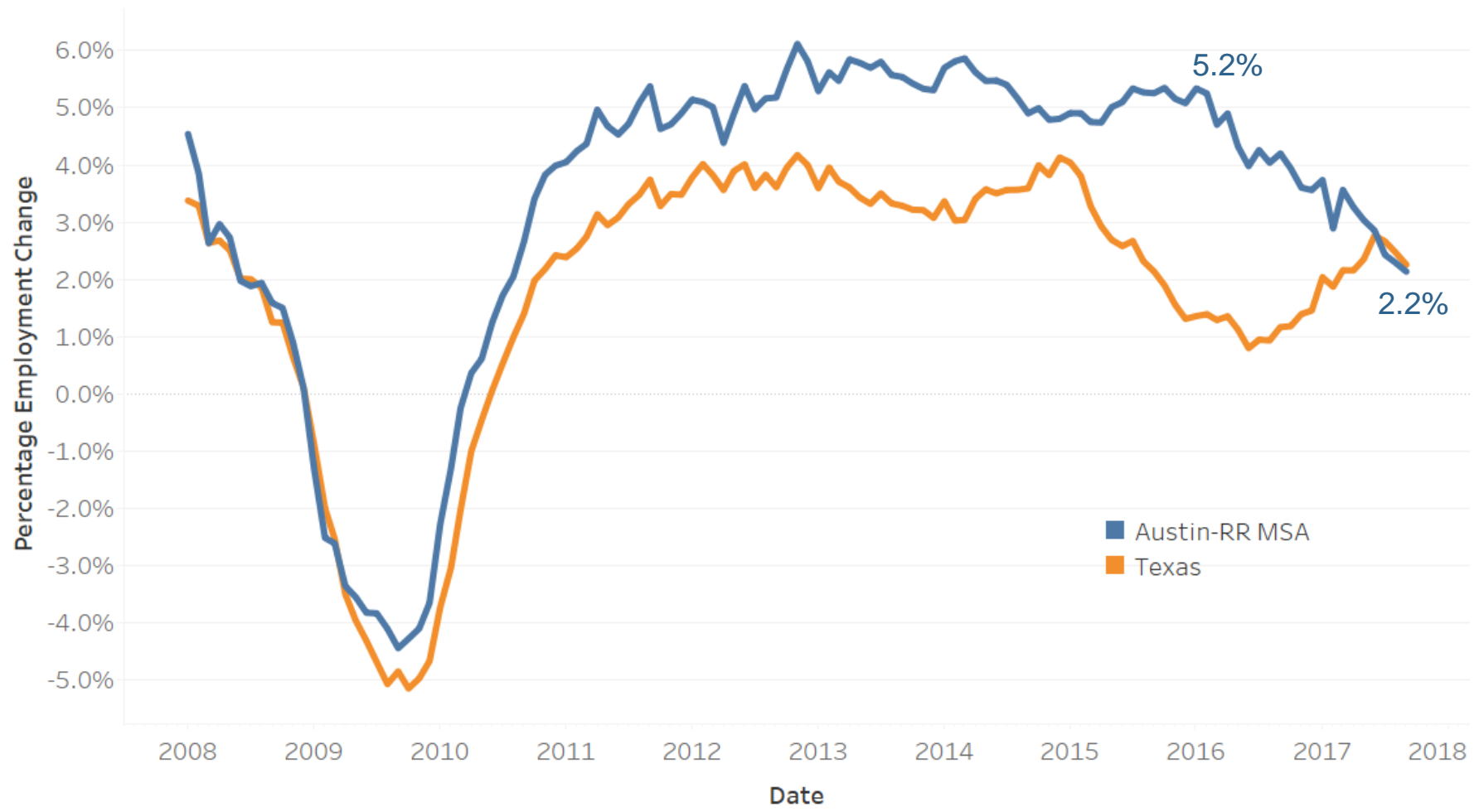
Rank	Metro Area	State	October 2016 Employment	October 2017 Employment	Y/Y Employment Change	Y/Y Percent Change
1	Riverside	CA	1,418.0	1,460.8	42.8	3.0
2	Orlando	FL	1,219.7	1,256.5	36.8	3.0
3	Raleigh	NC	609.7	627.9	18.2	3.0
4	San Antonio	TX	1,024.8	1,054.9	30.1	2.9
5	Dallas	TX	3,555.7	3,650.1	94.4	2.7
6	Nashville	TN	967.2	993.5	26.3	2.7
7	Louisville	KY	661.7	678.9	17.2	2.6
8	Las Vegas	NV	964.8	989.1	24.3	2.5
9	Atlanta	GA	2,708.2	2,774.0	65.8	2.4
10	Miami	FL	2,606.2	2,668.2	62.0	2.4
11	Minneapolis	MN	1,984.2	2,032.0	47.8	2.4
12	Seattle	WA	1,978.4	2,025.0	46.6	2.4
13	Boston	MA	2,735.1	2,797.4	62.3	2.3
14	Jacksonville	FL	673.7	689.5	15.8	2.3
15	Tampa	FL	1,313.1	1,341.8	28.7	2.2
16	Austin	TX	1,014.4	1,036.6	22.2	2.2

If looking at total employment change, the Austin MSA's 22.2k jobs added ranks 24th among large metros.

Source: Bureau of Labor Statistics

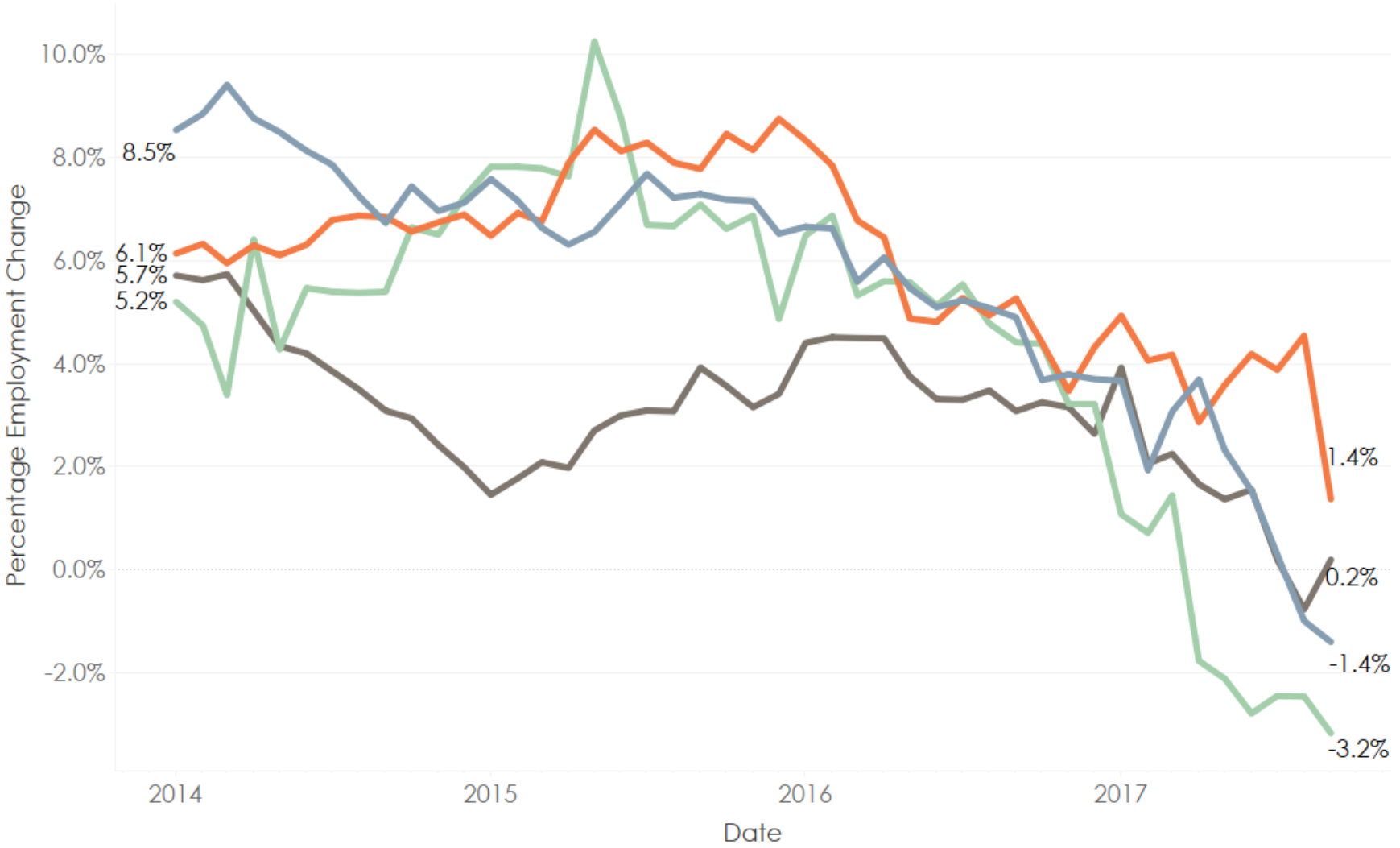
Job Creation in the Austin MSA

Year Over Year Percentage Employment Change



Source: Bureau of Labor Statistics

Job Creation in the Austin MSA



Industry

- Professional & Business Services
- Information
- Leisure & Hospitality
- Retail Trade

Source: Bureau of Labor Statistics

Transportation

Question 3:

Residents of which of the following CAPCOG counties have the longest average commute time?

1) Bastrop

2) Hays

3) Llano

4) Williamson

CAPCOG Commuting Patterns

County	Mean Travel Time to Work (2015)	Share of Workers with a Commute Longer than 45 minutes (2015)
Bastrop	33.2 minutes	33.5%
Blanco	26.0 minutes	24.3%
Burnet	25.5 minutes	19.4%
Caldwell	30.7 minutes	30.6%
Fayette	23.3 minutes	12.2%
Hays	29.3 minutes	24.8%
Lee	25.3 minutes	20.8%
Llano	23.4 minutes	13.0%
Travis	24.8 minutes	12.3%
Williamson	27.2 minutes	18.1%

Source: U.S. Census Bureau

CAMPO 2040 Plan

Road Type	2010 Lane Miles	2040 Lane Miles	2010 VMT	2040 VMT
Non-Toll Highways	854.76	913.39	14,028,184	20,804,732
Principal Arterials	4,542.8	526.45	17,683,441	35,275,730
Minor Arterials	3,833.53	3,952.23	4,703,847	12,813,999
Collectors	4,250.75	1,332.43	828,851	2,744,325
Locals	508.51	519.22	539,773	979,521
Other Non-Toll Roads	994.61	1,278.93	4,084,350	9,413,125
Toll Express Lanes	0	192	0	3,278,178
Other Toll Roads	417.39	697	1,254,110	8,126,608
Total	12,402.35	14,149.52	43,122,556	93,436,127

In this forecast, total traffic increases by 116% by 2040. Total road capacity expands by 14% in that time.

CAPCOG Commuting Patterns

Year	Total Workers	Drove Alone	Drove Alone (%)	Carpooled	Carpooled (%)
2009	810,017	607,740	75.0%	100,696	12.4%
2010	823,119	618,506	75.1%	98,933	12.0%
2011	845,297	633,174	74.9%	99,289	11.7%
2012	866,411	650,154	75.0%	97,904	11.3%
2013	890,006	675,639	75.9%	94,559	10.6%
2014	917,620	697,542	76.0%	96,734	10.5%
2015	954,212	728,481	76.3%	98,236	10.3%

Source: U.S. Census Bureau

Commute Solutions

Aging in the Capital Area

Question 4:

Which of the 10 CAPCOG counties has the largest share of its seniors (65+) that live alone?

1) Blanco

2) Caldwell

3) Fayette

4) Travis

Aging in the Capital Area

	Population 65+	Population 65+ and Living Alone	Share of Seniors Living Alone
Bastrop	9,926	2,110	21.3%
Blanco	2,252	480	21.3%
Burnet	9,094	2,069	22.8%
Caldwell	5,076	1,239	24.4%
Fayette	5,740	1,467	25.6%
Hays	17,046	3,823	22.4%
Lee	2,733	657	24.0%
Llano	6,493	1,637	25.2%
Travis	90,853	23,520	25.9%
Williamson	49,254	9,882	20.1%
CAPCOG	198,467	46,884	23.6%

A Note on Caregivers

- There are currently 12,600 personal caregivers employed in the Capital Area. The average annual wage for these workers is \$20,812. Many personal caregivers are unpaid family members.

-In 2016, roughly 1.4 million unpaid caregivers served 360,000 individuals with Alzheimer's Disease in Texas. This equates to 1.6 billion hours of unpaid care.

Source: U.S. Census Bureau & JobsEQ

Aging in the Capital Area

In the 2017 Fiscal Year, CAPCOG provided:

- 154,545 congregate meals
- 513,003 home-delivered meals
- 31,777 trips to congregate meal sites and medical appointments
- 9,215 hours of caregiver respite in-home services



Criminal Justice

Question 5:

Since 2007, the total number of crimes in the CAPCOG region has:

1) Declined by 15%

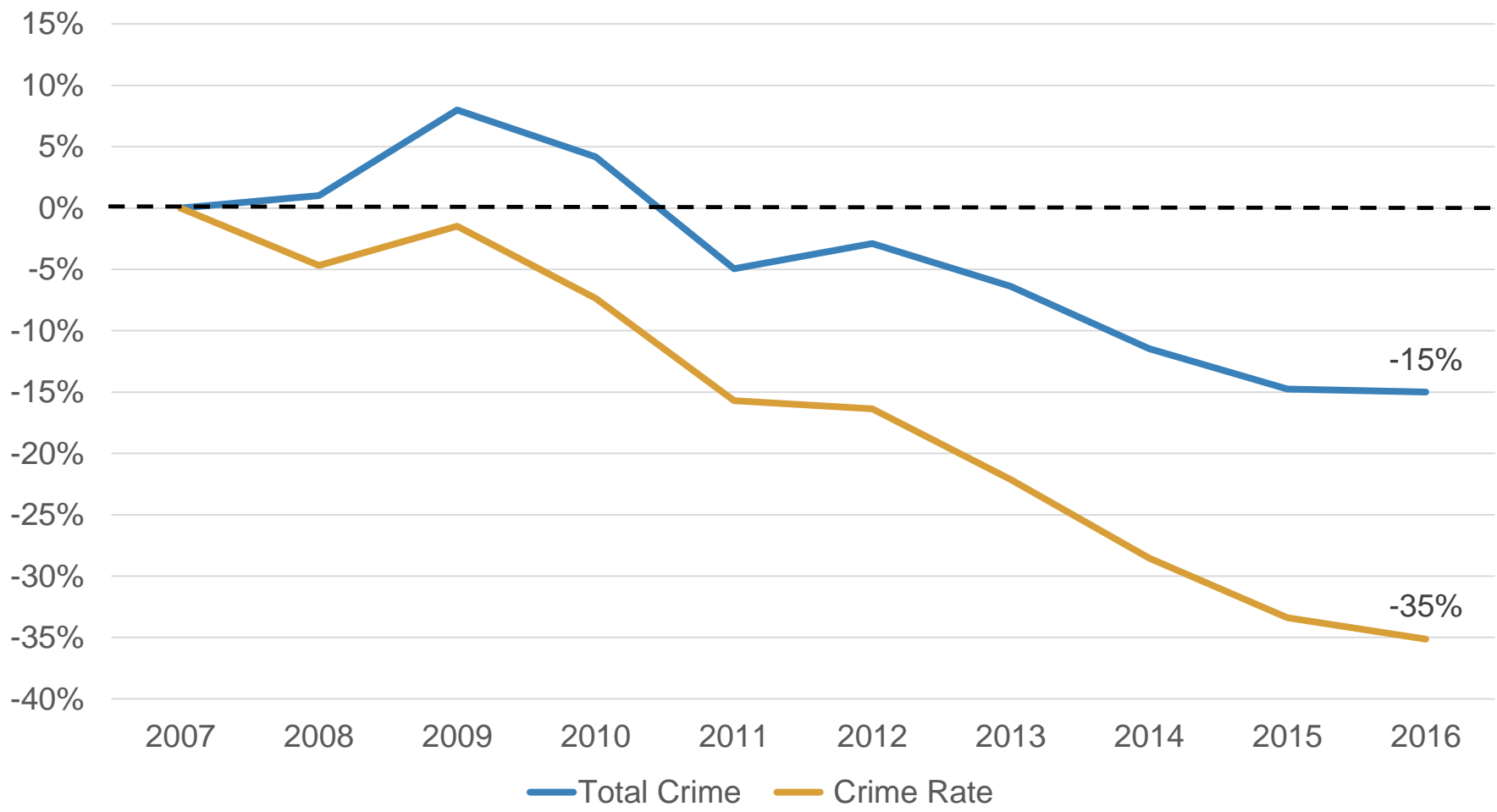
2) Remained flat

3) Grown by 5%

4) Grown by 15%

Criminal Justice

Change in Crime in the Capital Area



Source: FBI UCR Statistics

Criminal Justice

Criminal Justice Program Funding			
	2015	2016	2017
Grants	49	40	41
Grant funding	\$ 6,880,527	\$ 4,340,383	\$ 12,788,741

In the past 3 years, the CAPCOG Regional Law Enforcement Academy has:

- Graduated 153 cadets, 82 of which were sponsored from local law enforcement agencies
- Completed 10 Basic Peace Officer Classes
- Provided 9 Basic County Corrections Courses, graduating 98 new jailers for Bastrop, Caldwell, Fayette, and Lee counties
- Offered 144 in-service classes to 1,561 officers

Emergency Communications

Question 6:

When you text 9-1-1- to a communications center, the call taker:

- 1) Only knows which county you are in
- 2) Only knows the general vicinity of your location
- 3) Knows your exact location through GIS mapping
- 4) Will not get any information that identifies a possible location

Emergency Communications

How do I Text to 9-1-1?

1. Remember: "Call if You Can, Text if You Can't."
2. Enter the numbers "911" in the "To" field.
3. The first text message to 9-1-1 should be brief and contain the location of the emergency and type of help needed.
4. Push the send button.
5. Be prepared to answer questions and follow instructions from the 9-1-1 call taker.
6. Text in simple words – do not use abbreviations.
7. Keep text messages brief and concise.
8. Once you have initiated a Text to 9-1-1 conversation, do not turn off your phone until the dispatcher tells you it is ok to do so.



Resiliency

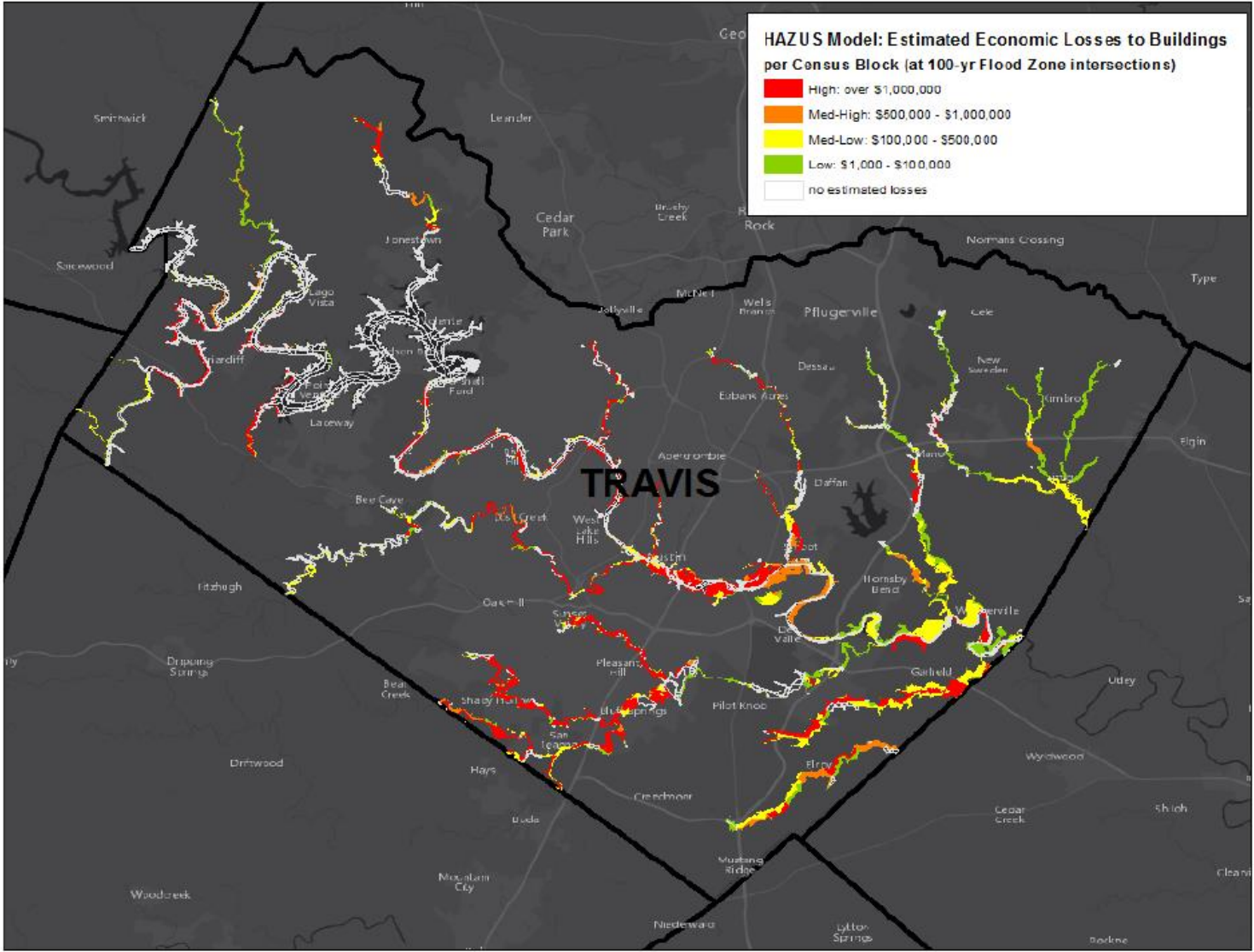
Question 7:

Warn Central Texas, the regional notification system, will send an emergency notification:

- 1) With instructions from CAPCOG
- 2) Only to a landline phone
- 3) At any hour of the day or night on a registered phone
- 4) To both you and your next of kin

Resiliency

Figure 22: HAZUS Economic Loss Estimates, 100-Year Flood Scenario, Travis County



Resiliency

- As of December 2017, 20 jurisdictions in the region with at least an Intermediate-Level Emergency Management Plan, meaning we have comprehensive response coordination
- About 120,000 self-registrations for CodeRED, the Regional Notification System, in addition to the over 1 million land lines already registered.
- 60 Homeland Security grants awarded since 2015, totaling roughly \$5.5 million in grant funding.
- Coordinating FEMA temporary housing assistance on behalf of the General Land Office for Fayette County following the Hurricane Harvey Disaster

CAPCOG Advisory Committees

Question 8:

During Fiscal Year 2017, CAPCOG held how many committee meetings (including executive committee, advisory committees, and so forth)?

- 1) 64
- 2) I don't know, but I wish there could be more. The opportunity to gather with dear colleagues and work on improving the best part of Texas is a delight.
- 3) Was it a series of committee meetings? It felt more like one long, interminable powerpoint presentation, punctuated by the occasional delivery of boxed lunches.

Thank y'all so much for your time this past year. Your work and participation is what enables CAPCOG to make an impact for the Capital Area.

Thanks!

Any questions?

Chris Schreck

Director of Planning and Economic Development

CAPCOG

Cschreck@capcog.org

512-916-6183