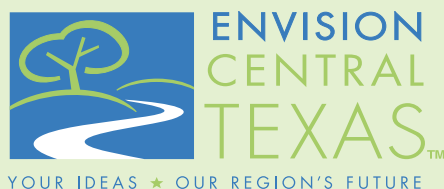




Painting by Mary Doerr

# A Vision for Central Texas

## May 2004





**Neal Kocurek**  
1936 – 2004

## In Memory of Neal Kocurek, Envision Central Texas Board Chair

The Envision Central Texas Board of Directors dedicates this document to our friend and leader, Board Chair Neal Kocurek. Neal's vision for a better future inspired us; his unique ability to build community connected us; and his passionate dedication guided us.

We honor Neal's life by pledging to work together to make this vision a reality for generations to come.

March 2004

**Dear Fellow Central Texans,**

Welcome. And please accept our invitation, as thousands already have, to partake of an exciting and ever evolving process we have come to call “Envision Central Texas” or simply “ECT.” We are bringing together the collective opinions, desires and wisdom of the people of Central Texas to paint a vision of the future of our five county region – a region that will grow by another million people over the next couple of decades.

Although I have lived here all my life, I still feel privileged to call this great place home and get excited talking about it. There may be no other place with as much geographic diversity. To the north we have the fertile farms of the blackland prairie; to the northeast we find post oak savannah; and to the southeast, pine forest is encountered. The south produces rolling ranchland, and then to the west we have the magnificent hill country laced with the sparkling waters of rivers, lakes and ponds. Semi-arid country lays just a short drive to the southwest. What a gift!

We enjoy a complete microcosm of the educational system – a world-class research university, another just to the east, a great teaching university, multiple small accomplished liberal arts institutions, a large community college, a large urban school district, many smaller districts and many private preparatory schools. Again, what a gift!

We are blessed with a strong business community, a strong environmental community, a strong neighborhoods community, and that incomparable “can do” Texas heritage. Again!

These tremendous resources have enabled us to develop what at one time was reported to be the highest per capita education of any city of its size or larger in the world. They have led at least one, non-Texan, national television personality to remark on the air that “Austin is arguably the most beautiful city in our nation.”

Our accomplishments have produced a quality of life that is the envy of a nation. Those who preceded us have left us magnificent gifts – beautiful lakes, charming neighborhoods, a strong economy, a great entrepreneurial spirit. Now we must continue to be great stewards for those who follow. The question, even in the face of much growth, is not how do we maintain our quality of life, but how do we improve upon it?

The answer rests in the able minds and the warm hearts of the people of Central Texas. Our vision, optimism, sense of community and concern for economy, environment and neighborhood have served us well. Now, some of our Central Texas leaders have suggested that we develop an additional resource – a regional vision that can help us focus on the future as a connected community. Where in the past we have been smaller communities separated by miles of open lands, today we must recognize that we are an interconnected and interdependent region that can benefit from a renewed sense of community – a regional community. For this, Envision Central Texas was created. We have done much good work as an honest broker already, but this work has just begun. Please join us in this grand journey into tomorrow.

**Sincerely,**

**Neal Kocurek**



# About Envision Central Texas

## Our Mission

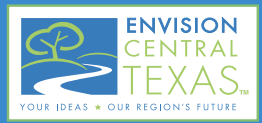
The mission of Envision Central Texas is to assist in the public development and implementation of a regional vision addressing the growth of Bastrop, Caldwell, Hays, Travis and Williamson counties, with an emphasis on land use, transportation and the environment. By working with the people of Central Texas to build a consensus, we can preserve and enhance our region's quality of life, natural resources and economic prosperity.

Envision Central Texas is a nonprofit organization composed of concerned citizens – representing the business community, environmental organizations, neighborhoods and policy-makers – who share the common goal of addressing growth with sound planning that has the interests of the region's existing and future citizens in mind. The organization has no regulatory powers and does not seek to forcibly impose a plan on the region or its local governments. Instead, Envision Central Texas will work cooperatively and in partnership with all entities and individuals to help guide the region toward a common vision for the future.





# A Vision for Central Texas



**F**rom the Blackland Prairies to the spring-fed escarpments of the Hill Country, from hip, urban Austin to the historic courthouse squares of Bastrop, Georgetown, Lockhart and San Marcos, our land and our towns affect us all and connect us all with a deep and abiding care for this place we call home. Our home is beautiful, diverse and prosperous, and consequently popular. Our quality of life causes us to regularly grace the “Top Ten Places” to live or do business from *Time* to *Fortune*.

In our time, we the people of the Central Texas region have witnessed a remarkable regional metamorphosis that continues today. This challenge of change has been both beneficial and detrimental to our perception of this area and our quality of life, depending on one’s time and place within this change. To address this challenge and its effects, we have come together as a region in an effort to understand in what ways, both today and for tomorrow, we’d like this region to grow, given the fact that so many people are greatly concerned about the effects of growth. The true questions are not “if” and “when” we will grow, but rather “how” and “where.” How can we ensure that our growth will remain a continued source of pride, vitality, diversity and opportunity, rather than a source of congestion, stagnation, division and inequality? Many sense that the quality of life here will not improve with more people, but rather will degrade over time. Such is not the way it must be; we do have a choice. The answers of tomorrow will be determined by the choices of today.

Only two short years ago, Envision Central Texas (ECT) was born through a farsighted gathering of concerned area leaders. The determined purpose of ECT was to build consensus around a vision, so that we may preserve and enhance our region’s quality of life, natural resources and economic prosperity.

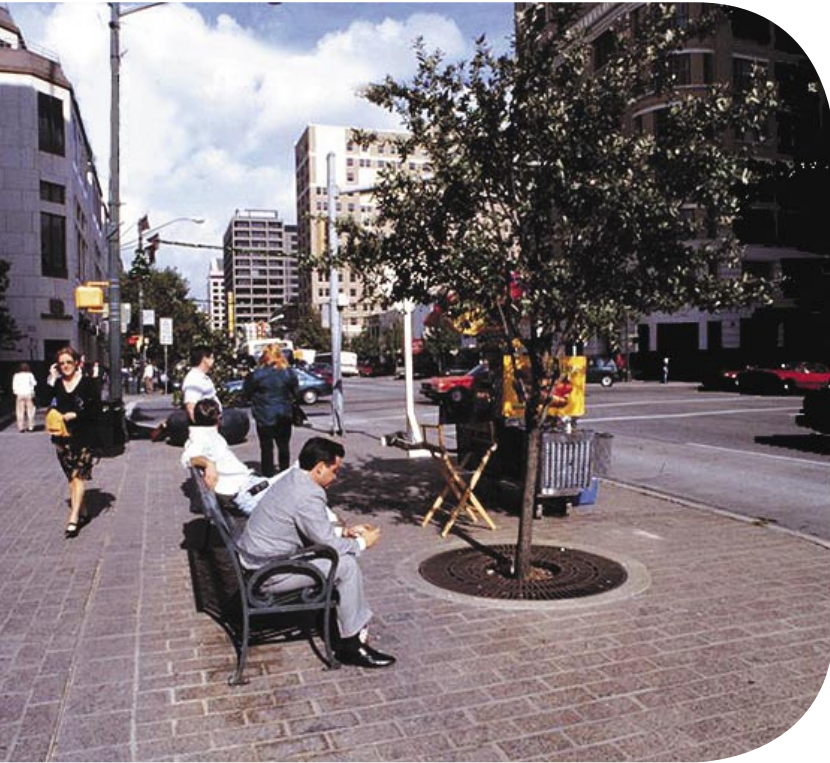


The vision process, as adopted by ECT, has taken shape as we have listened to citizens through workshops, surveys and community outreach over these past two years. During this time, we have found common threads of concern, and we are weaving these threads into our vision; a vision that can accommodate the 1.25 million new Central Texans who may be upon us in the next 20 to 40 years. We hope to envision the means by which the region can absorb these newcomers and better serve those already here in a manner that preserves and enhances our sense of place. What we have found is that the people who responded to the ECT surveys and participated in the ECT workshops are very concerned about how growth has occurred in our past and are looking earnestly for a different way to approach the growth in our future. Emerging from these concerns, and from their answers, and from the leaders of Envision Central Texas, comes the kind of regional vision we are seeking.



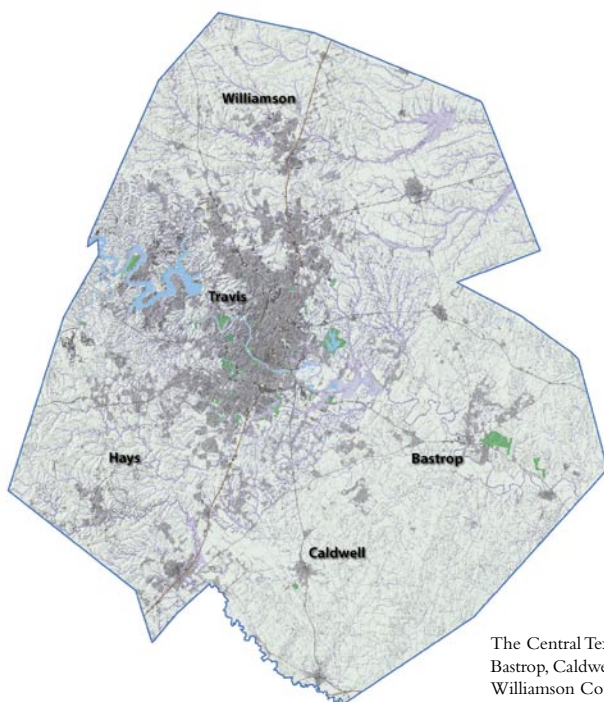
# A Vision of the Future

Central Texas can become an oasis among other regions of the Southwest – a vibrant, economically powerful, globally connected, locally led community that absorbs and tames its growth by becoming taller and denser in places, greener throughout, more connected – while keeping its unique sense of place and soul.



## What Will Central Texas Look Like From the Air?

- Plenty of open green space, creeks and parks throughout the region.
- Ecologically sensitive lands undeveloped and preserved.
- Prosperous smaller cities and towns that retain their individual identities.
- Greater developed area than today, but more compact and denser considering how many more people live in the region.
- Areas with townhomes, condos and lofts in greater number and density than traditionally seen in Central Texas.
- Clusters of businesses, industry and commerce, large and small, decentralized throughout the region.
- A highly efficient transportation network of transit and roadways linking more densely populated areas, industry clusters, shopping, downtown, and cities and towns throughout the region.
- More 'filled-in' downtown and town centers with lots of activity.
- At night, luminous ribbons connecting clusters of lights, with large expanses of land unlit by development.



The Central Texas Region:  
Bastrop, Caldwell, Hays, Travis and  
Williamson Counties

## What Will Central Texas Look Like From the Ground?

- Green, with clean creeks and rivers, wildflower vistas and open space.
- Urbanized areas that are denser, livelier, with more people and taller buildings.
- New buildings and greater density in areas where revitalization is supported by both the local community and the market.
- More diverse, with many people of different races and ethnicities.
- Highways much improved and connected to safe routes for transit, bicycles and pedestrians.
- An urban energy that comes from activity – cycling, walking, active people out-and-about.
- After dark, bustling nightlife, live music and well-lit streets in urban clusters.
- Many narrower, more traditional neighborhood streets.
- A host of architectural gems, wonderful buildings that warm and inspire people.
- Urban, neighborhood and rural character that has been preserved.



## What Will Daily Life Be Like?

- Easier and safer to walk, bicycle or drive from place to place.
- More housing choices closer to places to work, dine and shop.
- Transit is a real and viable alternative to driving.
- Less time in the car and improved alternatives to cars.
- More interaction of races, cultures and ages.
- Places to go in the evening that are active, entertaining, fun and safe.
- Lots of recreation and green space.
- Easier-on-the-budget housing, property taxes and infrastructure costs.
- A greater feeling of community and safety because more people know their neighbors.
- An overall sense of opportunity and possibility in a region where communities share goals and work together on common problems.





# What Will Be the Outstanding Features



## An Environment That Is Beloved and Protected Forever.

Reflecting a regionwide concern for environment, new development patterns will result in – quite simply:

- Lots of open green space, parks and trails, designed for people, in the populated areas.
- The most ecologically sensitive land protected in perpetuity.
- Clean air, even as the population grows.
- Clean water in our lakes, creeks and aquifers.
- Sustainable water supplies, both surface and groundwater, for our region.



## An Effective Transportation System That "Got Ahead of the Curve."

New development patterns – with denser, more populated areas – that will help expand our transportation choices and enhance the effectiveness of transit. In turn, transit choices and a more effective roadway system could reduce congestion, even as our population grows. The vision calls for more choices, with:

- Consistently good highways and roadways that are adequately sized and well maintained.
- Built-in 'intermodal' alternatives to cars – rapid transit, bicycle lanes, trails, sidewalks and pedestrian features, buses and shuttles.
- HOV/HOT lanes that reward carpooling and transit, and streamline car travel.
- A regional highway system with tollways and freeways that are intermodally linked, with built-in alternatives to cars (e.g., embedded bike lanes, sidewalks), and denser areas and smaller cities' hubs on route.
- Transit that works and is coordinated with the locations of major employers, denser areas of housing, industry clusters and other modes of transportation.
- A transit system that could include rapid transit, rail (commuter, light and other) and rapid buses.
- Transit hubs that attract locally scaled business activity and investment as an attractive market alternative to current fragmented development patterns.





# of the Central Texas Region?



## An Economy That Is Dynamic and Diverse, With Job Opportunities Throughout the Region.

New development patterns – with clusters of business, industry and commerce linked with an effective and efficient transportation system – that will enhance our region's economic viability. Among the appeals to employers (existing and future) is ease of getting to and from work, which saves time/money and relieves stress. In addition to supporting business drawing on our existing workforce, these patterns will help attract and retain highly educated and skilled employees to our region. The vision calls for:

- A strong base of local businesses, large, medium and small.
- An emphasis on affordability and favorable cost of living is a key economic driver.
- A globally connected region, with job opportunities throughout the region, especially for the existing workforce.
- Robust smaller towns and communities across the region that are not overwhelmed by growth, and retain their identity and sense of community.
- Entrepreneurs as a continual source of vitality, jobs and economic growth.
- Full participation in the economic opportunities (jobs, advancement, business ownership and property ownership) by all socio-economic groups.
- Resources of state government and university systems harnessed to strengthen our region's economy.
- A viable and vibrant downtown Austin, with thousands of residents, a unique history and artistic character, great streets full of life and activity both day and night – yet another regional draw for employers and employees.
- Smaller-scale, vibrant town centers and neighborhoods in surrounding communities.
- Easy connections to the world by Internet, air travel and telecommunications.



## A Variety of Housing Choices Affordable for Everyone in the Region.

Today, it is not easy to find affordable places to live – for many, the picture is bleak, especially for lower-income families and singles. A vision should address this issue by providing:

- New development patterns that generate more choices, especially more affordable choices.
- More traditional-styled neighborhoods with narrower, more pedestrian friendly streets that help build a sense of community.
- Areas with owner-occupied housing – townhomes, lofts, condominiums within walking distance of transit and parks, with storefront businesses.
- More efficient use of land and infrastructure to enhance affordable housing choices.





# What Will Be the Outstanding Features



## Actions That Demonstrate an Understanding That Social Equity and Racial Harmony are Important Values That Strengthen the Region.

A regional vision will be irrelevant to much of our community unless we make equity and harmony part of the larger vision, with a process open to all. The vision must include respect, civility, and opportunities for all, regardless of race, color, religion, economic status, gender, ethnic or national origin, disability, sexual orientation or age. While it has not been the focus of ECT to date, the vision for our region should include:

- A new focus on community and neighborhood planning to close the gaps for traditionally underserved populations – with emphasis on gaps in health, education, housing, jobs and transportation.
- Making all our children a priority from the earliest age, so they are nurtured and have opportunities for success.
- Appreciation of cultural differences that begins at an early age, goes beyond tolerance to active celebration, and recognizes that our community is stronger because of them.



## The Protection and Enhancement of Our Neighborhoods, Towns, Rural Areas, Historic Sites and Special Sense of Place.

Change and inevitable growth bring trade-offs, but we must retain our region's unique character by:

- Thinking and acting like a region, understanding that our futures are linked.
- Striving to understand, appreciate, protect, and maintain the unique features, neighborhoods, historic structures, and cultural characteristics of our cities and communities, and the choices and options they offer.
- Encouraging a sense of personal and community responsibility that is intolerant to crime.





# of the Central Texas Region?



## Regionwide Understanding and the Spirit That Our Fortunes Are Tied Together.

To succeed the vision must also include:

- Support for local planning processes, both existing and future, with high citizen participation as a balanced means of realizing both local and regional goals and visions.
- Highly collaborative public/private sector dialogue, with market forces being a critical determinant in identifying and choosing courses of action.
- Respect for private property rights, laws and the importance of balance in planning decisions that affect landowners.
- The harnessing of market forces by giving consumers new choices and rewarding those who make the choices available.
- Vigorous private sector support and involvement in economic, civic and regional issues.
- The State of Texas, colleges and universities as partners in Central Texas' future. Collaborative co-existence and problem solving among cities and towns throughout our region.
- A new era of public engagement – forums, voting, volunteering and civic involvement in matters that will shape our future.
- Unified buy-in of multi-jurisdictional effort recognizing that every governmental authority is an equal partner in the process.



# From Where Does the Vision Come?

**E**nvision Central Texas (ECT) is a nonprofit organization assisting the public in developing a regional vision to address growth issues in Bastrop, Caldwell, Hays, Travis and Williamson counties. ECT is distinguished from other visioning projects by its overall inclusiveness, broad geographic scope, level of diverse public involvement, and application of visioning technologies. This is the first time in the history of this five-county region that individuals representing businesses, civic organizations, developers, local governments, environmental organizations, transportation organizations and neighborhoods have all come together to help spearhead the development of a regional vision to address growth.

In soliciting the public's ideas, concerns and expectations, ECT has utilized a multifaceted process that was facilitated by Fregonese Calthorpe Associates (FCA), a regional planning consulting firm based on the west coast. FCA has extensive experience with developing regional "visions" and has provided consulting services in all phases of the process. FCA has had success with this visioning process in several communities throughout the United States, including Chicago, Denver, Portland and Salt Lake City, as well as internationally in Australia and Europe.

Early in the project, ECT's board of directors adopted a set of guiding principles that served as an important first step in thinking about how and where the region should grow during the next 20 years. These principles provide a statement of values about policy choices that involve land use in Central Texas. These guiding principles state that:

- **The region's transportation system, environmental planning and preservation goals, social equity aspirations, and economic foundation should be coordinated to support a sustainable regional community.**
- **Regional policy choices should support choices of housing, transportation and employment.**
- **Central Texas values diversity in all policy choices.**
- **All decisions should promote enhanced quality of life for the residents of Central Texas.**

(See the Executive Summary on the Resource Page of our Web site for a complete listing of the principles.)



Throughout the ECT process, there has been a tremendous commitment to engaging every spectrum of the public – including citizens, neighborhood groups, business leaders, civic leaders and interest groups – in this discussion of our shared future. See the next section entitled "Listening to the People" for details.

The culmination of this process has been the synthesis of all the public input by the 73-person ECT Board of Directors into a regional "vision." This vision, which has been derived from the informed expressions of the desires of the citizens of the region, will guide ECT as we move forward in assisting residents, regional planners, and policy-makers with voluntary implementation guidelines for working towards this common vision.





## ECT Has Provided Six Primary Opportunities for Public Input and Guidance:

1. **Two focus group sessions** to solicit opinions about future growth, with participants screened to ensure geographic, cultural and economic diversity. (May 2002)
2. **Telephone survey** of 750 respondents, randomly selected from all five counties, to gather additional input related to regional growth. (July 2002)
3. **Seven planning workshops** with approximately 1,200 individuals participating in workshops of both regional scope (held in Travis County) and sub-regional scope (held in Bastrop, Caldwell, Hays, Travis and Williamson counties). (September/October 2002)
4. **Six Community Test Site Workshops** focused on how specific sites could be developed in concert with regional visioning goals, with sessions held in Bastrop, Dripping Springs, East Austin, Lockhart, Pflugerville and southern Round Rock. (March/April 2003, with results presented in September 2003)
5. **Public feedback survey** and extensive grassroots outreach that resulted in more than 12,500 survey responses, making it one of the broadest-based surveys ever conducted in Central Texas. The questionnaires, distributed throughout the region and available on the ECT Web site, invited respondents to give their input on four different growth scenarios and how well each scenario would address the region's challenges. As the final element in this cumulative process, the survey results were the driver in creating the vision by the ECT Board. (Fall 2003)
6. **Leadership Workshop** attended by 150 of the region's leadership to give guidance for the next steps that Envision Central Texas should take. (February 2004)

## The Four Scenarios

Envision Central Texas used all of the citizen input in developing four possible future patterns of land use. Each pattern is a distinct type that represents clear and consistent choices. Regional transportation alternatives were developed to accompany the land use alternatives. Using state of the art transportation and land use modeling, the region now has a considerable amount of information about what these four alternative futures could mean.

**Scenario A** was based on an extrapolation of recent land development trends and some economic models. Most residential growth occurs as single-family homes on separate lots in new developments. There is very little redevelopment or infill in Scenario A. Most of the job growth occurs in Travis County. As the region's development spreads out, the trips get longer and so more time is spent in getting around. In Scenario A, the regional transit system includes a commuter rail system and a bus rapid transit system designed for the concentration of jobs found in the urban core.

**Scenario B** illustrates a future where most of the growth in Central Texas would occur along major transportation corridors – both existing and new ones. A significant amount of this growth occurs in mixed-use developments. All counties receive significant job growth as well as housing growth. Across the region, average daily travel time is lower than in Scenario A, but congestion in the urban core is significantly higher. Regional transit includes commuter rail and a core light-rail system.

**Scenario C** would share new growth between both existing and new communities in Central Texas. Each existing city and town would add jobs and people, primarily in mixed-use developments. In addition, new towns would be built along major transportation corridors, with open space between each community. Regional transit includes commuter rail and a bus rapid transit system.

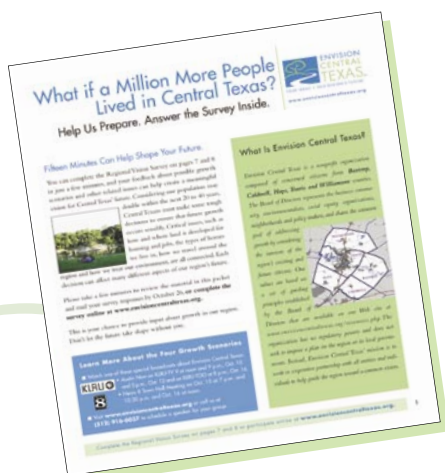
**Scenario D** would concentrate growth in existing communities. More than one-third of the households and two-thirds of the jobs would be accommodated on existing developed land. Regional transit includes extensive commuter rail and a full light-rail transit system.

## Public Reaction

As part of developing the Envision Central Texas vision, the project team distributed hundreds of thousands of surveys to the residents of the region and asked them to respond to various questions about the four scenarios. Thousands of residents of all five counties responded to the survey. A very large proportion of the population is represented – about 1 out of 100 residents, 40 times more than would be counted in a random sample scientific survey. While scientific surveys are a very useful tool, they cannot reveal any depth to the results. In the case of this survey, over 12,000 people engaged in a conversation – listening and absorbing the material Envision Central Texas presented and responding thoughtfully and candidly.



# What the People Said



## Of the Common Themes That Surfaced, Three Themes Were Echoed Regionwide:

### 1. Call for change in how growth is managed.

Participants across the region voiced a desire to see growth managed in ways that are very different in attitude, involvement and commitment from what has existed until now. People are concerned about the prospect of 1.25 million more people living here, and they voiced strong support for fresh approaches, open discussions, and innovative thinking and planning to accommodate the additional population. But they also called for the preservation of what makes Central Texas special. Our remarkable natural environment, our cultural diversity and the unique character of our communities and neighborhoods are all valuable assets to be protected and enhanced as our region changes. They are receptive to a vision that offers a positive alternative to our current approach to planning – one that respects both private property rights and community values, and through which our laws, land use plan and market forces can provide creative solutions.

### 2. More choices.

People voiced a desire for more choices in their lives – in transportation (a mix of roads and transit), housing (type, affordability and location) and opportunities (education, interests and jobs). They want a vision that produces more options so that people can choose a means of transportation, find suitable housing and pursue opportunities that they desire.



### 3. Continued involvement.

Many participants expressed gratitude and enthusiasm for the process begun by ECT. They want to be involved in creating a positive future for our region. They particularly appreciated how easy it was to get involved (workshops in their communities, several possible ways to express their thoughts, etc.). Even with the challenges and difficult issues before us, they appreciated the opportunity to discuss the trade-offs generated by growth and want to continue the dialogue going forward.





**T**he Envision Central Texas (ECT) Board of Directors has conducted extensive discussions with our partners and fellow residents in recent months. We wanted to know what people thought of the vision and what steps ECT should take next. There have been discussions about whether Envision Central Texas should continue, and if so, what role it should play in taking the next step in helping to achieve a better future for the region. We propose the following as next steps:

## Our Organization's Role

We believe that the community wants ECT to continue operating. It stands to reason that the organization should continue to provide the specialized services that have been most helpful to Central Texans during the past two years, including:

- Continuing to engage a wide variety of people from around the region in community discussions, using innovative techniques to reach out to a broad audience.
- Acting as an “honest broker” by attempting to get the best information available on the issues and presenting these to the public in an unbiased and informative fashion.
- Working to build consensus decisions that are both fact based and that have the widest possible support.
- Building cooperation and agreement among regional entities.
- Advocating for and defending solutions that the ECT process has helped craft.

## Our Future Activities

ECT could go in a variety of directions. The danger is in trying to accomplish too much and ultimately accomplishing too little. Therefore, we believe that we should initially focus our activities in the following areas:



Photo courtesy of TxDot.

**Encourage land-use planning to be considered as an integral part of future transportation planning, whether it involves roadways, transit, bicycle lanes or pedestrian sidewalks.**

This combination is one of the most cost effective ways to improve transportation, and ECT can bridge the gap and break down the barriers that often prevent land use and transportation from being planned together.

**Assist communities in developing and integrating regional economic development goals into their local strategies for business development and to encourage regional cooperation.** We all live in one economic region, but sometimes our economic development activities compete against one another instead of competing against other regions. This vision calls for a more equitable distribution of jobs around the region and for regional efforts to stimulate prosperity in all areas and for all people. ECT will work on specific projects to increase regional prosperity and will work to increase cooperation among cities and counties so that jobs and the benefits they provide can be more equitably distributed.

**Advocate for initiatives that achieve a balanced geographical distribution of housing and jobs through the region.** A better jobs-housing balance could go a long way toward improving our traffic congestion, and could have a significant effect on regional economic development initiatives and the affordability of transportation and housing. This balance would also foster the type of mixed-use development that would allow various other transportation alternatives, including transit, walking and biking. ECT can play a role in facilitating communication among employers, home builders, local planning organizations, public officials and neighborhoods to achieve a better balance.

# Where Do We Go From Here?

## **Demonstrate and model positive examples of increased density and mixed-use that have been achieved by public-private partnerships in concert with local planning processes.**

Human nature is for people to be cautious about what they haven't yet experienced. And while there have been many new kinds of development here in the last 20 years, the reality is that mixed-use, multistory buildings, infill development, townhouses and condos and other essential parts of the regional vision are still relatively rare. We will work with the private and public sector and with neighborhood groups to help create innovative, visionary developments that people want to have in their neighborhood.

## **Analyze the best practices around the country in creating a regional open space funding plan that provides fair compensation to land owners.**

There are many public and private open space initiatives in various parts of the five-county region, but they lack the funds necessary to realize their goals. The available resources varies widely from community to community, resulting in a patchwork of open space that may not reflect the regional priorities. What will it take to develop a reliable source of funding to forever preserve and protect our sensitive environmental areas and provide the open space needed to balance the effects of a more urbanized region? ECT will become a resource to identify best funding practices in other parts of the country and help coordinate these initiatives throughout the region.

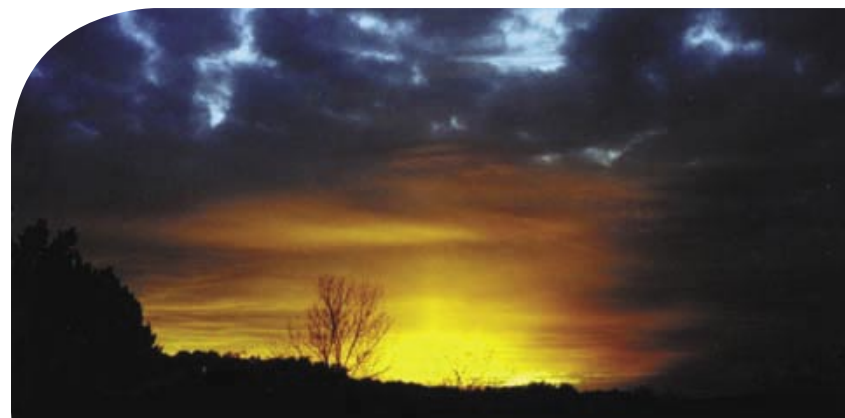
**Assist communities in developing goals that will close the gap for the underprivileged and underserved populations, particularly in the areas of health, education, housing, jobs and transportation.** Much still needs to be done to chart a specific course of action to address these issues, but Envision Central Texas can be an important resource and facilitator in this process. As a next step, Envision Central Texas will seek additional community input so that these issues can be addressed in the same focused way as the other regional issues included in this vision statement.

**Recognize projects and initiatives that demonstrate best practices for achieving the regional vision.** Landowners, developers, employers, neighborhoods, public officials and others who show a commitment to the vision set forth by ECT should be recognized and appreciated for their good example and willingness to help achieve regional goals. ECT will identify and bring positive reinforcement to those who are willing to take risks and become pioneers in shaping our region.

ECT understands and appreciates the concerns that have been expressed by some neighborhood leaders that many years of hard work and community-based planning efforts may be over-ridden by this regional visioning process. As has been stated many times, ECT is presenting a vision for the region, and it will be the task of others to create a plan for a particular community. Across Central Texas many jurisdictions and communities have been working on growth related issues for many years. ECT acknowledges that the foundation of these planning efforts is a vision of what each local community wants for its future. ECT believes these local visions and plans, created with extensive citizen participation, should be respected as part of the broader regional vision produced from the ECT effort. We may debate various aspects of the plans as they come forward, but ECT will respect those plans and this vision statement is not intended to be used to supercede them.

We understand that there will be many challenges and obstacles to overcome before this vision becomes a reality. Whenever there is change, there will be disruptions and trade-offs, but ECT believes the short-term difficulties we encounter will be heavily out-weighed by the long-term benefits we can achieve for Central Texas. We believe the people of Central Texas are looking for leadership to point us in the right direction, and they are willing to do the things necessary to move in that direction.

Finally, we will work steadfastly to foster the regional point of view – to bring to the forefront the reality that we live in a single, integrated region that shares its future, its problems and its successes. We firmly believe that to succeed in the future, Central Texas must approach issues together, with debate, collaboration, cooperation and wisdom. That requires bringing residents together, listening to one another, discovering the facts and then crafting solutions as a group. ECT is committed – not to knowing the answers automatically – but to the belief that together this special region can find solutions that preserve our livability.





## Now...Is the Time.

We, who hold these places so dear, Austin, Bastrop, Georgetown, Lockhart, San Marcos, this Central Texas Region, a precious place we wish to protect, yet promote; with our oak-crested hills and our arroyos cloaked in sycamores; our tame Colorado and our wild Pedernales; our incredible colleges, universities and schools from which spring our outstanding employers and excellent workforce; our peaceful courthouse squares and our rambunctious Sixth Street, but most of all, us; we are a uniquely aware community, which must now answer a call. Before it is too late. A call for our future, for our children's future. A call to come together. Not as disparate individuals seeking their required end, but as a community seeking its desired end. An end that could also be defined as a new beginning, a beginning not simply brought by our leaders, but rather sought by our people.

The people of our region have recently responded in a decisive and cohesive manner to the Envision Central Texas surveys and workshops noted above. It is now up to the overall community to make use of this as it sees fit. You, and your neighbor and your neighbor's neighbor, this is who must learn from it and grow with it. To grow either taller or smaller, more compact or less, but certain to grow in a manner that enhances our future. To grow in a manner where we can honestly say we tried to make our lives better for tomorrow than our lives were yesterday. That is what Envision Central Texas is about and that is the call we must not only answer but aspire to. However, this can only occur if we, as an informed and involved community, are willing to work together with a clear vision for the future. This is where Envision comes in, both as a means to define our community's desires and as a tool to help us realize them. So please, use this tool and join us as we join you to Envision our future together. Now...is the time.

# Our Sponsors

## Financial Donors:

Austin Business Journal  
Bastrop County  
Caldwell County  
Capital Area Metropolitan Planning Organization  
Capital Metropolitan Transportation Authority  
City of Austin  
City of Georgetown  
City of Round Rock  
Carol C. Clark  
Downtown Austin Alliance  
First Texas Bank  
Graves, Dougherty, Hearon and Moody  
Hobby Family Foundation  
Jackson Walker, L.L.P.  
Lower Colorado River Authority  
The Real Estate Council of Austin, Inc.  
Alice Romberg  
St. David's Health Care System  
Seton Healthcare Network  
Travis County  
The University of Texas at Austin  
Williamson County

## In-kind contributions:

Austin American-Statesman  
Austin Community College  
Austin Fairchild Art Foundation  
Austin Independent School District  
Capital Area Planning Council  
CarrAmerica Realty Corporation  
Cedar Park Chamber of Commerce  
Centex Beverage, Inc.  
City of Austin  
City of Cedar Park  
City of Dripping Springs  
City of Georgetown  
City of Lockhart  
City of Pflugerville  
City of Round Rock  
City of Taylor  
David Chapel Missionary Baptist Church  
Dripping Springs Independent School District  
Greater Elgin Chamber of Commerce  
First National Bank Bastrop  
First United Methodist Church of Bastrop  
First United Methodist Church of Dripping Springs  
H-E-B  
Highland Resources, Inc.  
Lady Bird Johnson Wildflower Center  
Lockhart Independent School District  
Lower Colorado River Authority

The Root Cause Project, A Community/St. David's  
Health Initiative  
St. David's Health Care System  
St. Mary's of the Visitation Catholic Church  
Sedona Staffing  
State of Texas  
Sun City Texas by Del Webb  
Super S Foods  
Texas Downtown Association  
Texas State University  
T.P. Gilmore Company, Inc.  
Travis County  
Tuerff-Davis EnviroMedia  
The University of Texas at Austin School of Architecture  
Urban Land Institute  
White Lion

## Data We Have Available

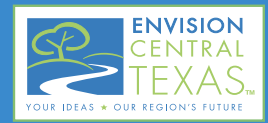
Leadership Workshop Summary Results  
Regional Vision Survey  
Summary of Survey Results  
Scenario Briefing Packet – July 2003  
Community Test Site Workshop Results  
Planning Process Overview  
Frequently Asked Questions  
Board of Directors List  
Fregonese Calthorpe Associates Background  
Focus Group Results Report – May 2002  
Telephone Survey Results Report – July 2002  
Telephone Survey Results Fact Sheet – July 2002  
Recursos en Espanol

- Folleto: "Sus ideas. Su voz."
- Preguntas Frecuentes
- Proceso de Planificacion Regional
- Encuesta Telefonica – Julio del 2002

As part of the Envision Central Texas (ECT) process, we have developed powerful land use and transportation models that allow the analysis and comparison of many critical factors using state-of-the-art tools. These models are an important resource and legacy of the ECT process. These tools are currently housed at the Capital Area Planning Council for use by jurisdictions and entities through out the Central Texas Region.



# Our Board of Directors



Suzanna Almanza, [People Organized in Defense of Earth and her Resources \(PODER\)](#)

David Baker, [Wimberley Valley Watershed Association](#)

Gordon Baker, [Texas Downtown Association \(TDA\)](#)

Senator Gonzalo Barrientos, [\\* Texas Senate, District 14](#)

Rob Baxter, [\\* The Friendship Alliance](#)

Joe Beal, [\\* Lower Colorado River Authority \(LCRA\)](#)

Jon Beall, [\\* Save Barton Creek Association](#)

Lisa Birkman, [Brushy Creek Municipal Utility District](#)

Judge Samuel Biscoe, [Travis County Judge](#)

Thurman Blackburn, [The Real Estate Council of Austin, Inc. \(RECA\)](#)

Terry Bray, [Vision 2010](#)

Samuel L. Bryant, [Champion Austin](#)

Coyle Buhler, [Central Texas Clean Air Coalition](#)

Fred Butler, [Community Action Network \(CAN\)](#)

David Chiu, [\\* Former Mayor of San Marcos](#)

Pamela Contreras-Jones, [Greater Austin Hispanic Chamber of Commerce](#)

Ashton Cumberbatch Jr., [Greater Austin Chamber of Commerce; Austin Bridgebuilders Alliance \(ABBA\)](#)

Susan Dawson, [Greater Austin Chamber of Commerce Executive Committee](#)

Judge John Doerfler, [Williamson County Judge](#)

David Foster, [Trans Texas Alliance](#)

Silver Garza, [The Real Estate Council of Austin, Inc. \(RECA\)](#)

Ron Giles, [Neighbors for Neighbors](#)

Terry Gilmore, [\\* Hill Country Conservancy](#)

Vicky Gomez, [Department of Small and Minority Business Resources, City of Austin](#)

Elizabeth Gonzales, [Greater Austin Hispanic Chamber of Commerce](#)

Jay Hailey, [\\* Urban Land Institute \(ULI\), Austin District Council](#)

Patricia Hayes, [\\* SETON Healthcare Network](#)

Mark Hazelwood, [\\* SETON Healthcare Network](#)

Mike Heiligenstein, [\\* Central Texas Regional Mobility Authority \(CTRMA\)](#)

Ian Inglis, [MoPac Neighborhood Association Coalition](#)

Bryan King, [Austin Neighborhoods Council \(ANC\)](#)

W. Neal Kocurek, [\\* St. David's Health Care System](#)

Representative Mike Krusee, [Texas House of Representatives, District 52](#)

F. Scott LaGrone, [Lower Colorado River Authority \(LCRA\)](#)

Sterling Lands II, [\\* Eastside Social Action Coalition](#)

Laraine Lasdon, [Austin-San Antonio Corridor Council](#)

Lowell Lebermann, [\\* Hill Country Conservancy; Central Texas Regional Mobility Authority \(CTRMA\)](#)

Herman Lessard Jr., [Austin Area Urban League, Inc. \(AAUL\)](#)

Nelson Linder, [National Association for the Advancement of Colored People, Austin Chapter \(NAACP\)](#)

Julia Marsden, [Region K Water Planning Group](#)

Judge Ronnie McDonald, [\\* Bastrop County Judge](#)

Billy Moore, [Austin-San Antonio Corridor Council](#)

Rick Murphy, [Pflugerville Community Development Corporation](#)

Mayor Gary Nelon, [City of Georgetown](#)

John Nelson, [Taylor Economic Development Corporation](#)

David Newberger, [Save Our Springs Alliance \(SOS\), Mopac Boulevard Alliance](#)

Rev. Joseph C. Parker Jr., [Chestnut Neighborhood Planning Team](#)

Judge Jim Powers, [Hays County Judge](#)

Robin Rather, [\\* Liveable City; Hill Country Conservancy](#)

Steve Rivers, [AG Edwards & Sons, Inc.](#)

Art Rodriguez, [Advanced Micro Devices \(AMD\)](#)

Mike W. Rollins, [Greater Austin Chamber of Commerce](#)

Alice Romberg, [\\* Rural Capital Area Workforce Development Board \(RCAWDB\); Community Activist](#)

Mayor Ray Sanders, [City of Lockhart](#)

Robin Schneider, [Texas Campaign for the Environment](#)

Mayor Tom Scott, [City of Bastrop](#)

Julie Shackelford, [Conservation Fund](#)

Jim Skaggs, [\\* Austin-Area Citizens for Mobility Excellence \(AACME\)](#)

Martha E. Smiley, [Grande Communications, Inc.](#)

Craig Smith, [Barton Springs/Edwards Aquifer Conservation District](#)

Sheril Smith, [Lone Star Chapter of the Sierra Club State Conservation Office](#)

Channy Soeur, [Austin Asian American Chamber of Commerce](#)

Robin Stallings, [Texas Bicycle Coalition](#)

Dean Fritz Steiner, [\\* University of Texas at Austin School of Architecture](#)

Robert Stluka, [Former Mayor of Round Rock](#)

Mike Swayze, [Round Rock Chamber of Commerce](#)

Joe Vining, [City of Round Rock](#)

Betty Voights, [\\* Capital Area Planning Council \(CAPCO\)](#)

Jim Walker, [\\* Central Texas Sustainability Indicators Project](#)

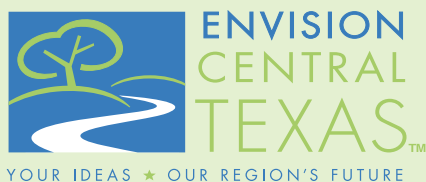
Lee Walker, [\\* Capital Metropolitan Transportation Authority \(Cap Metro\)](#)

Pete Winstead, [Hill Country Conservancy](#)

Judge H. T. Wright, [\\* Caldwell County Judge](#)

Mayor Will Wynn, [\\* City of Austin](#)

[\\*Member of Executive Committee](#)



[www.envisioncentraltexas.org](http://www.envisioncentraltexas.org)  
512-916-6037