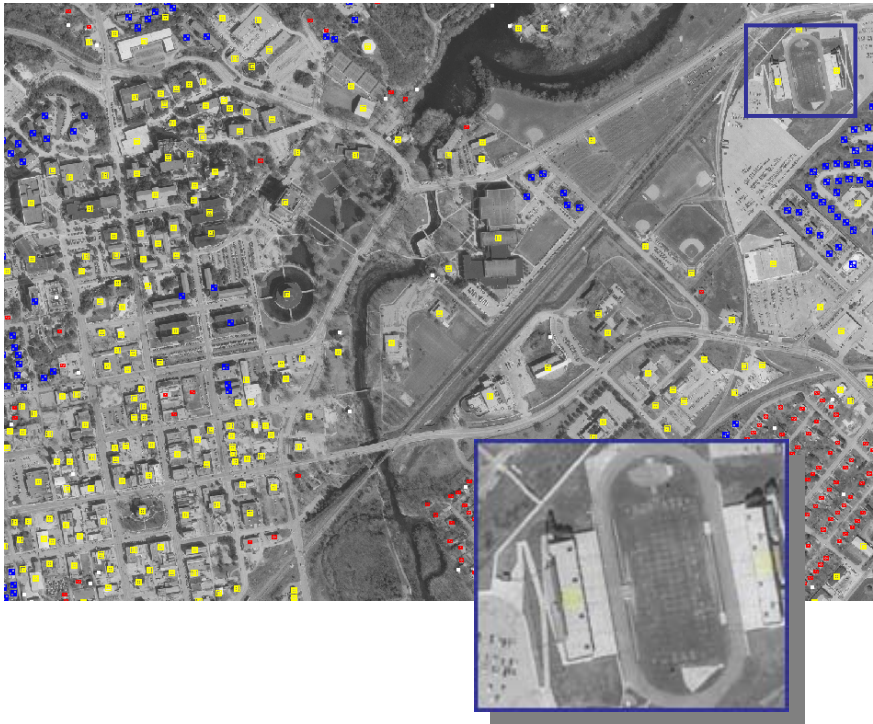


# The Capital Area GeoMap



The Capital Area Geospatial Base Map (GeoMap) Project is a multi-year, cost-sharing initiative to produce and maintain current geospatial base map data for the Capital Area. Historically, project participants have received several dollars of data for every dollar contributed, making GeoMap a great opportunity for Central Texans to develop low cost, accurate, and up-to-date Geographic Information Systems (GIS) data for their organization.

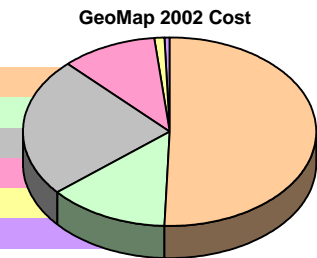
The Capital Area Council of Governments developed GeoMap to produce and maintain current geospatial base map data for our region. In support of this goal, GeoMap participants are striving to:

- Leverage taxpayer dollars to create enhanced base map products at a reduced cost;
- Minimize duplicative efforts to generate base map data in our region;
- Establish a common geographic framework for addressing local and regional issues; and
- Create readily accessible base map data in the public domain

GeoMap supports many critical applications including disaster preparedness, E-9-1-1, and infrastructure management.

## GeoMap 2002 Cost Savings Worksheet

| GeoMap Participants         | Square Miles | Ortho-imagery | Planimetrics | Contours | Lidar    | Management | GeoMap Cost | Non-GeoMap Cost Est. | GeoMap Savings Est. |
|-----------------------------|--------------|---------------|--------------|----------|----------|------------|-------------|----------------------|---------------------|
| <b>CAPCOG</b>               | 8,582        | 381,612       | 41,473       | 0        | 0        | 57,220     | 480,305     | 506,346              | 26,041              |
| <b>TNRIS</b>                | 8,582        | 117,674       | 0            | 0        | 0        | 7,326      | 125,000     | 403,563              | 278,563             |
| <b>Will. Co./Georgetown</b> | 158          | 164,544       | 0            | 31,318   | 25,648   | 5,869      | 227,378     | 290,258              | 62,879              |
| <b>San Marcos</b>           | 112          | 71,245        | 0            | 7,158    | 19,120   | 2,460      | 99,983      | 258,872              | 158,889             |
| <b>Round Rock</b>           | 14           | 7,401         | 0            | 0        | 1,865    | 332        | 9,598       | 27,699               | 18,100              |
| <b>Lockhart</b>             | 35           | 5,923         | 0            | 0        | 0        | 212        | 6,135       | 41,205               | 35,069              |
| <b>TOTAL</b>                |              | \$748,399     | \$41,473     | \$38,476 | \$46,633 | \$73,420   | \$948,400   | \$1,527,942          | \$579,542           |



**GeoMap participants saved over \$575,000 in 2002!**