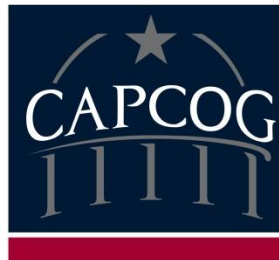


The State of the Capital Area in 2016

CAPCOG General Assembly

September 14, 2016

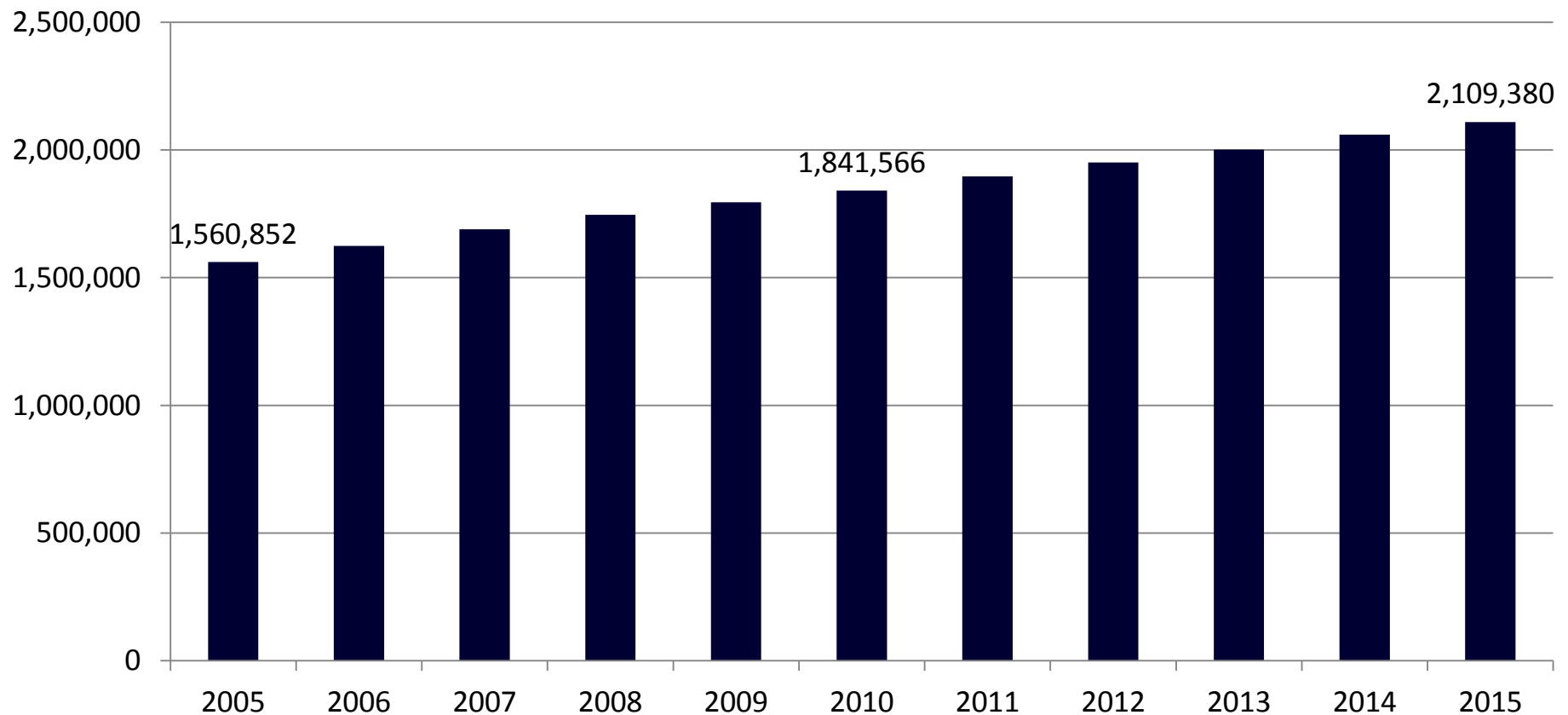


- Population
- Jobs and Employment
- Transportation
- Land Use and Development
- Affordability & Equity
- Environmental Quality
- Disaster Resiliency

- Popular Conception:
 - ✓ Population is growing,
and all the new folks
look like this guy



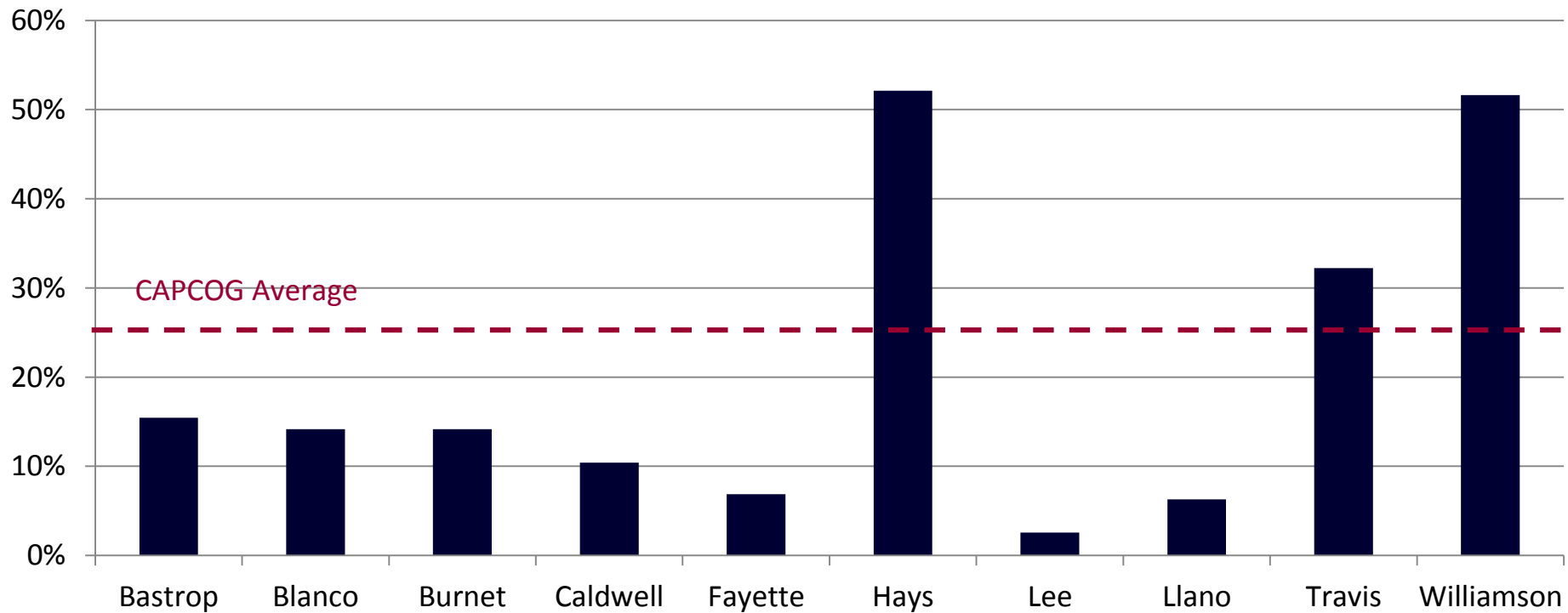
- Reality



Source: EMSI

- Reality

Population Change (2005-2015) in the CAPCOG Region

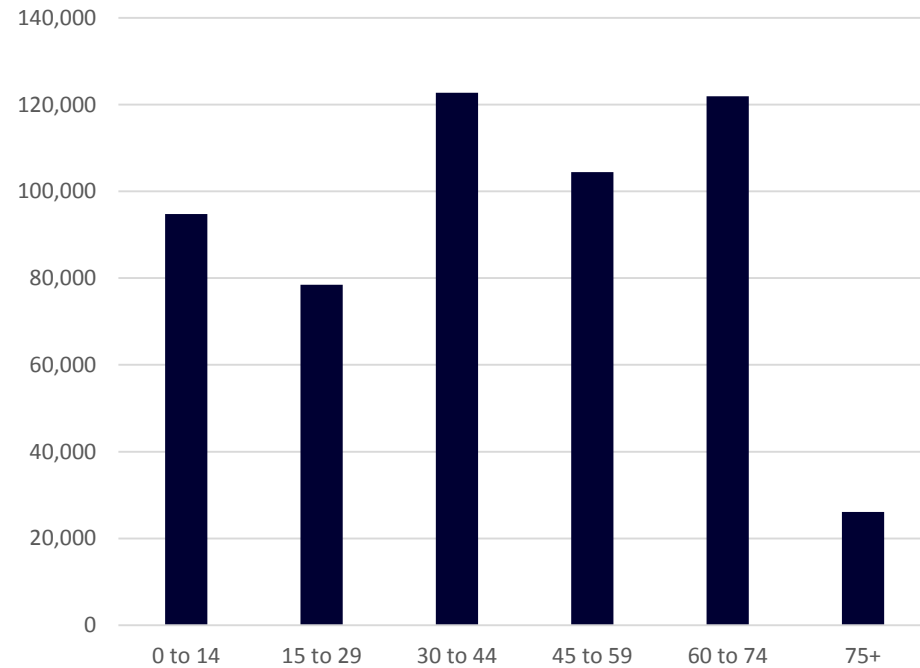


Source: EMSI

Population and Demographics

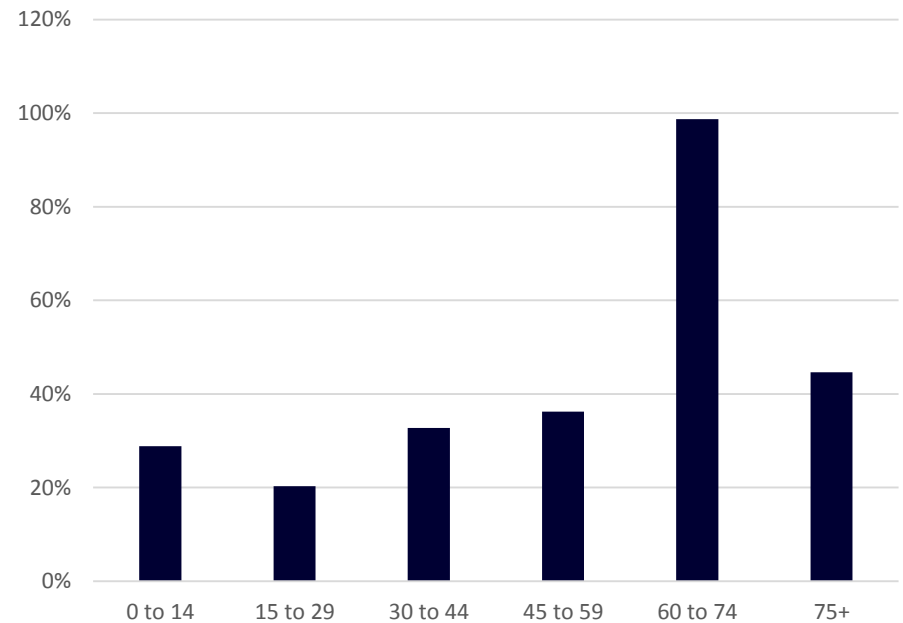
- Reality

Population Change by Age Cohort (2005-2015)



Source: EMSI

Percent Population Change by Age Cohort (2005-2015)



Source: EMSI

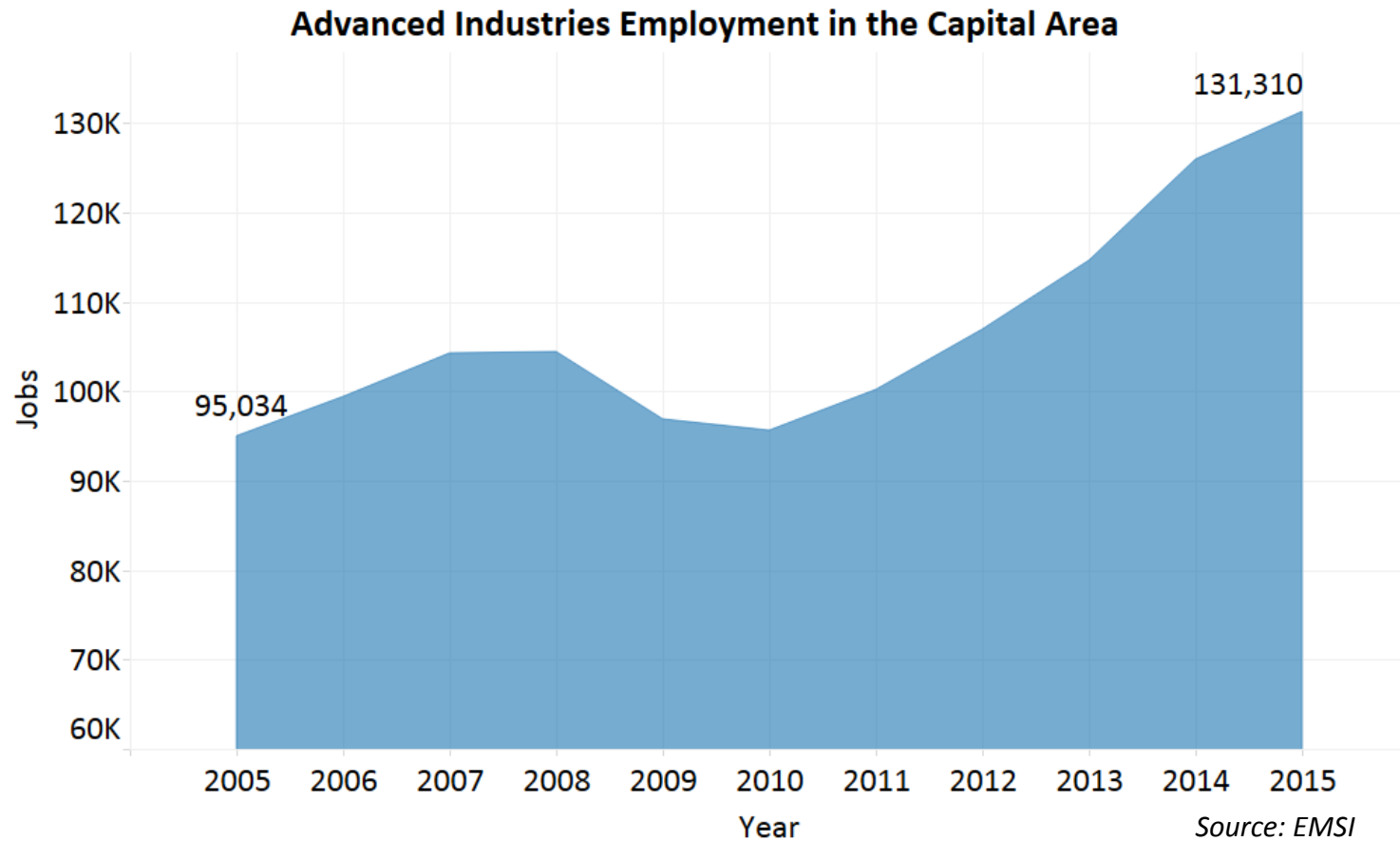


- Popular Conception:

Capital Area Economy



- Reality: Times are good!



- Reality: Times Could be Better!
- 2015's Top 5 Jobs by Employment
 - ✓ Retail Salespersons: 32,512 (\$13.26 / hr)
 - ✓ Office Clerks: 30,637 (\$16.15 / hr)
 - ✓ Food Prep Workers and Servers: 27,472 (\$9.49 / hr)
 - ✓ Customer Service Reps: 23,399 (\$14.92 / hr)
 - ✓ Cashiers: 20,153 (\$10.21 / hr)
- Of our 1.05 million jobs, 608k (58%) are in occupations where the mean wage is less than \$20 per hour (\$41,600 per year).

- Popular Conception:

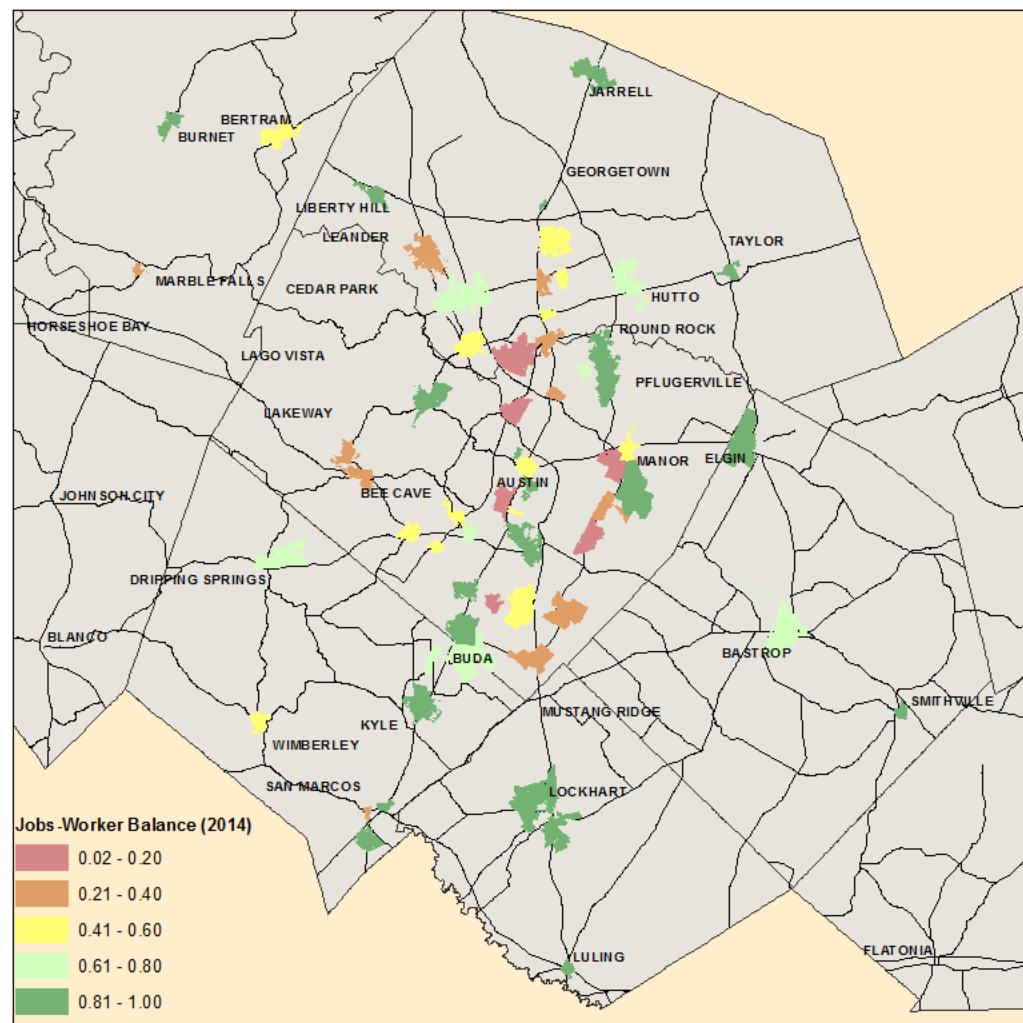


- Reality:



- Slightly More Nuanced Version of Reality:
 - ✓ In 2014, 315,000 workers commuted to jobs in Travis County from somewhere else in the region.
 - ✓ 49.8% of workers cross a county line to get to work
 - ✓ 76.1% of workers drive alone to get to work
- ~22,000 new jobs each year*
- * 76% of workers drive alone*
- = 16,700 new cars on the road at rush hour each year*

- Commuting patterns and modes
- Where do we develop new residences and jobs?

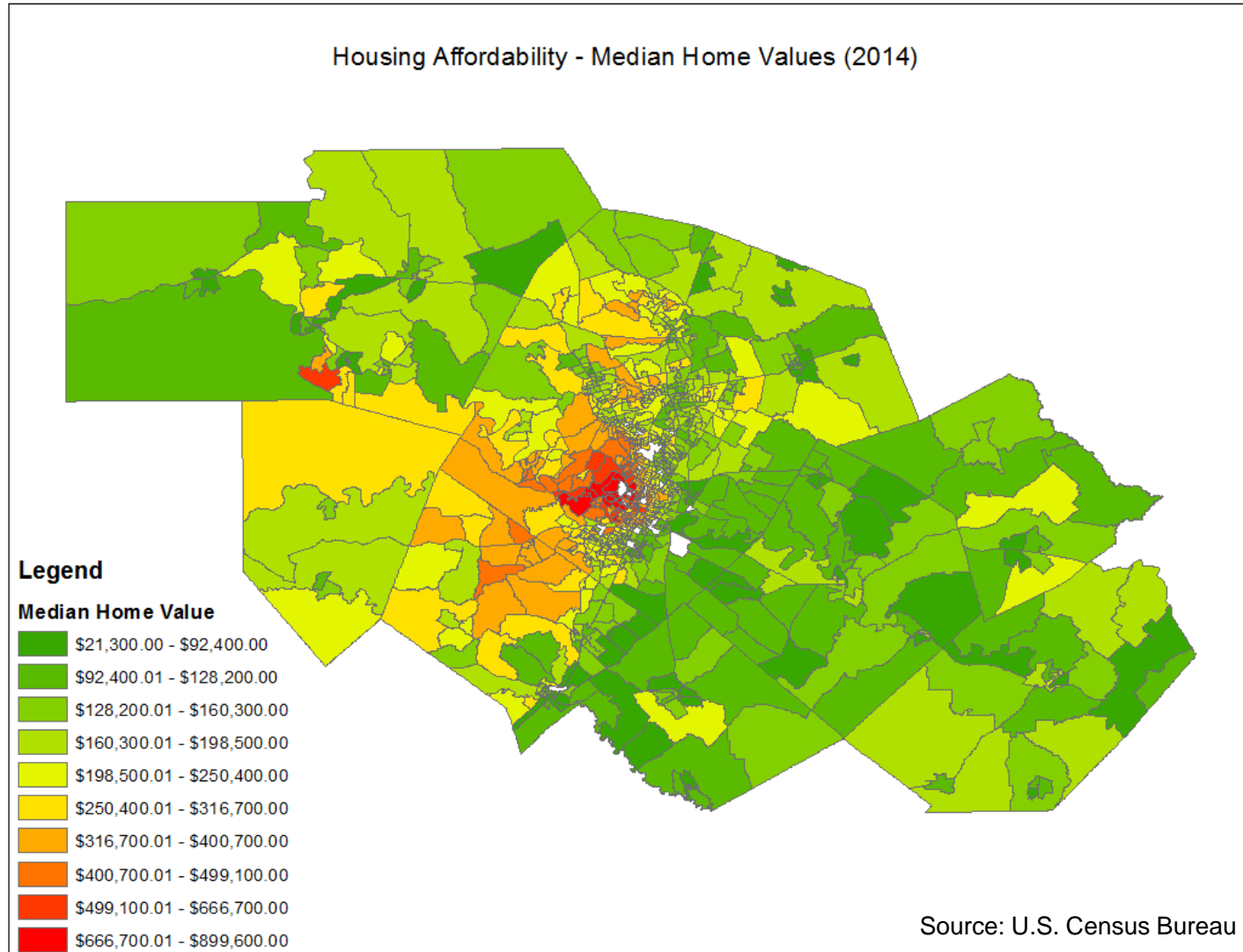


- Popular Conception (at least at the national level)



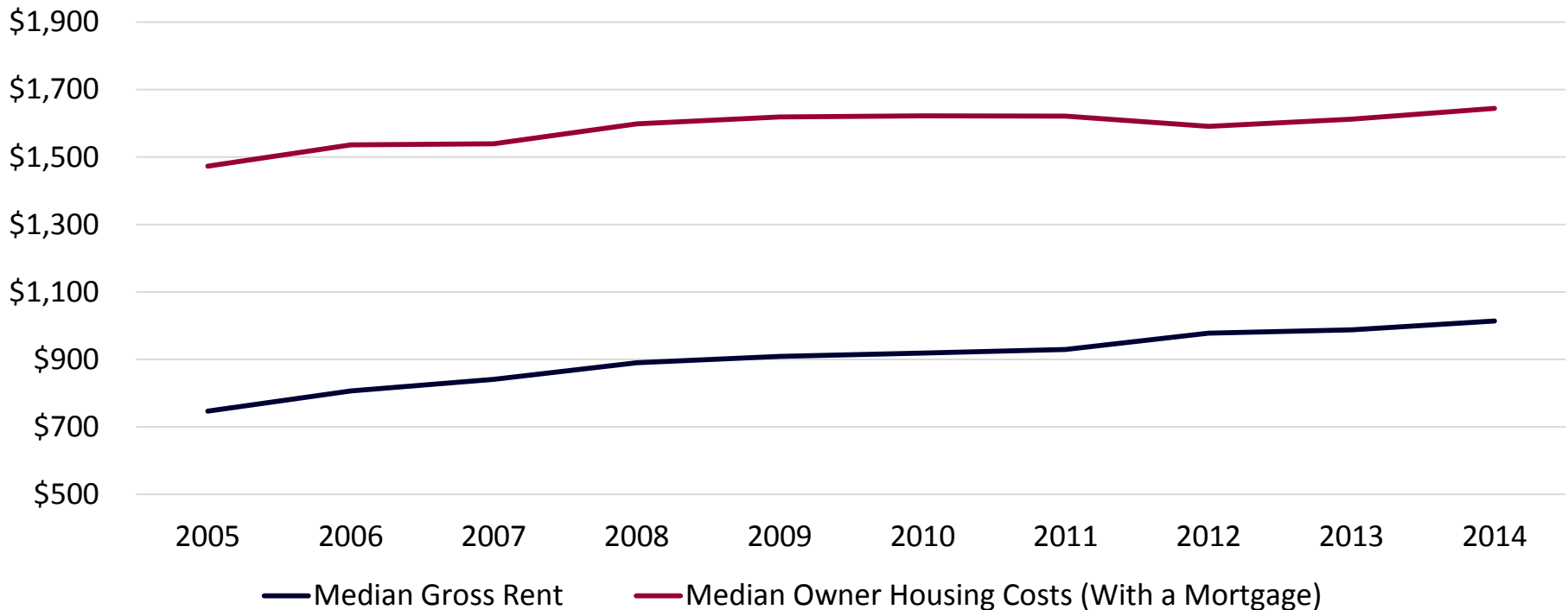
EAST AUSTIN STUDIO TOUR

- Reality:



- Reality:

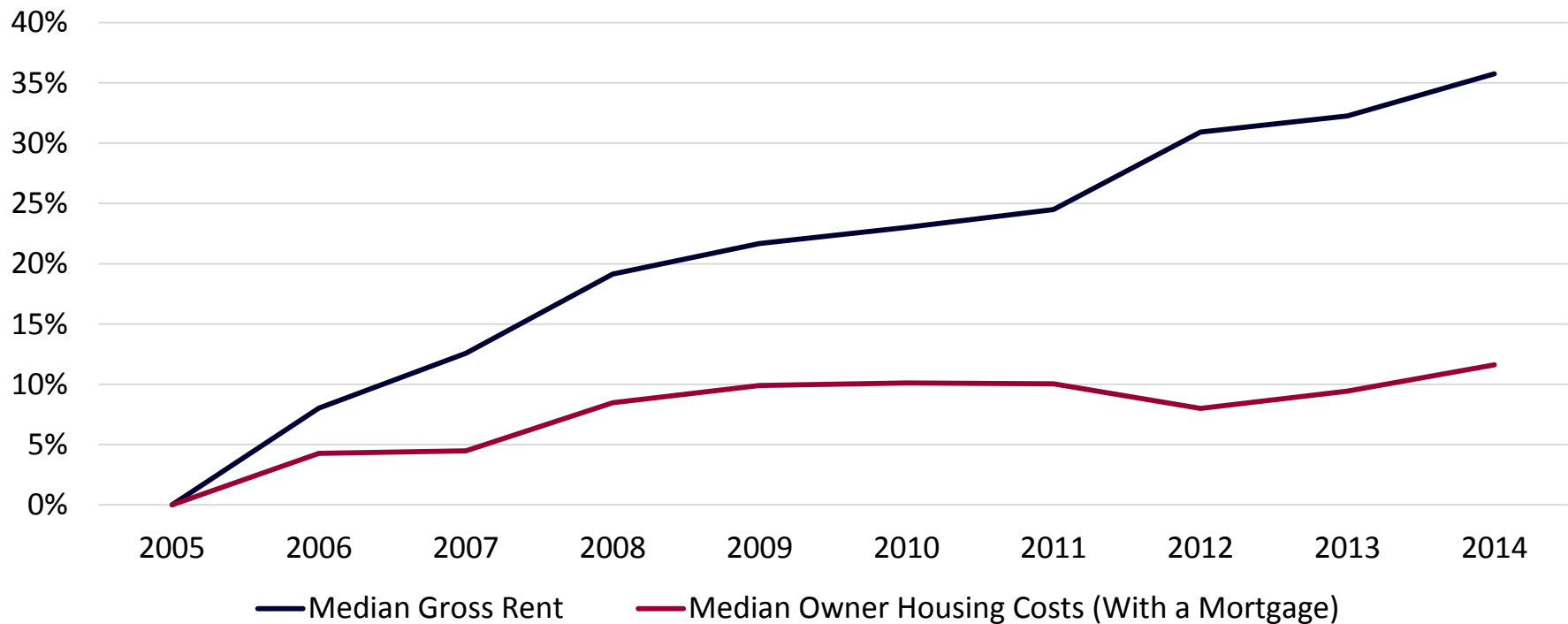
Change in Housing Costs in the Austin MSA
(2005-2014)



Source: U.S. Census Bureau

- Reality:

Change in Housing Costs in the Austin MSA
(2005-2014)



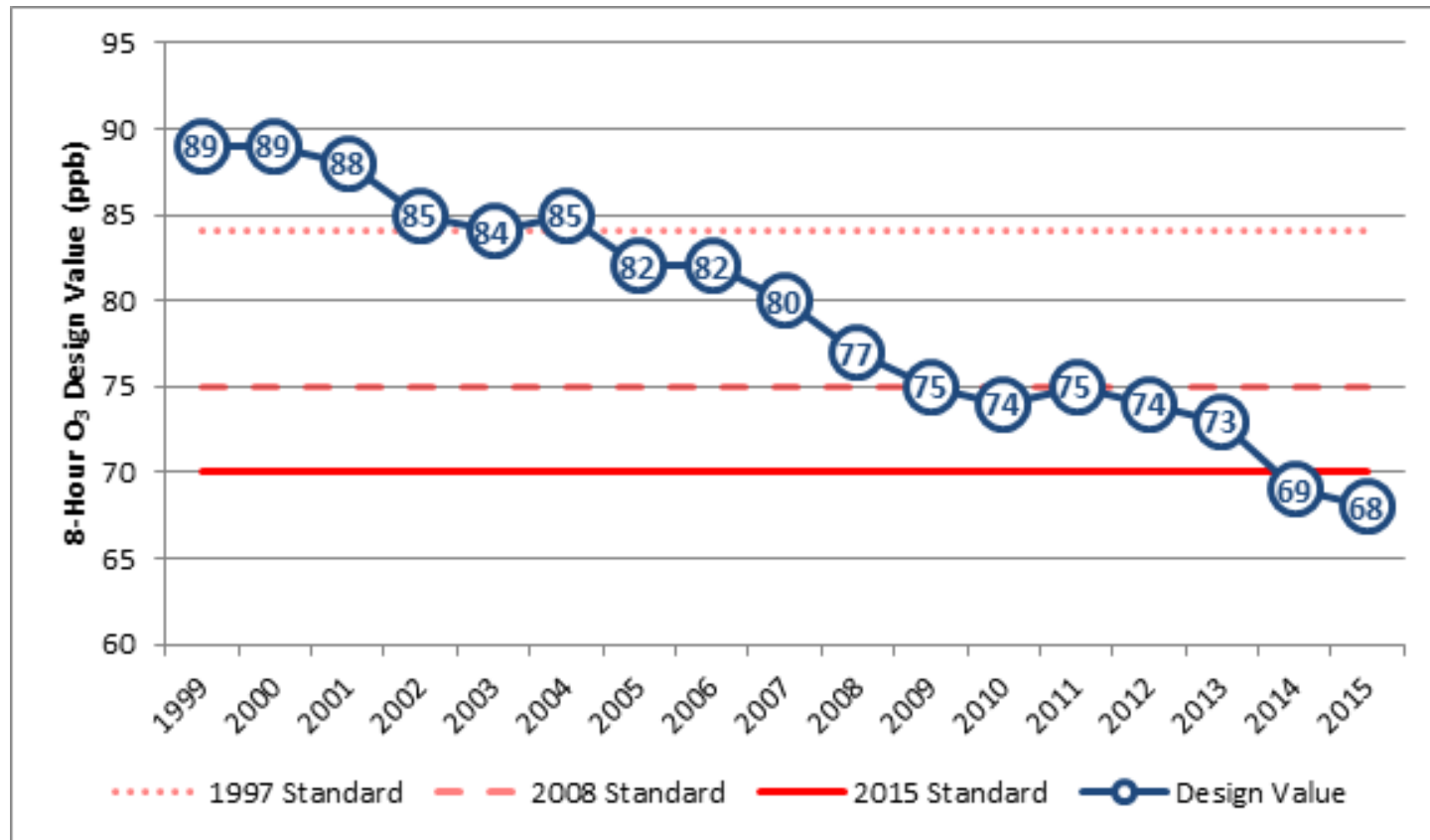
Source: U.S. Census Bureau

- Popular Conception

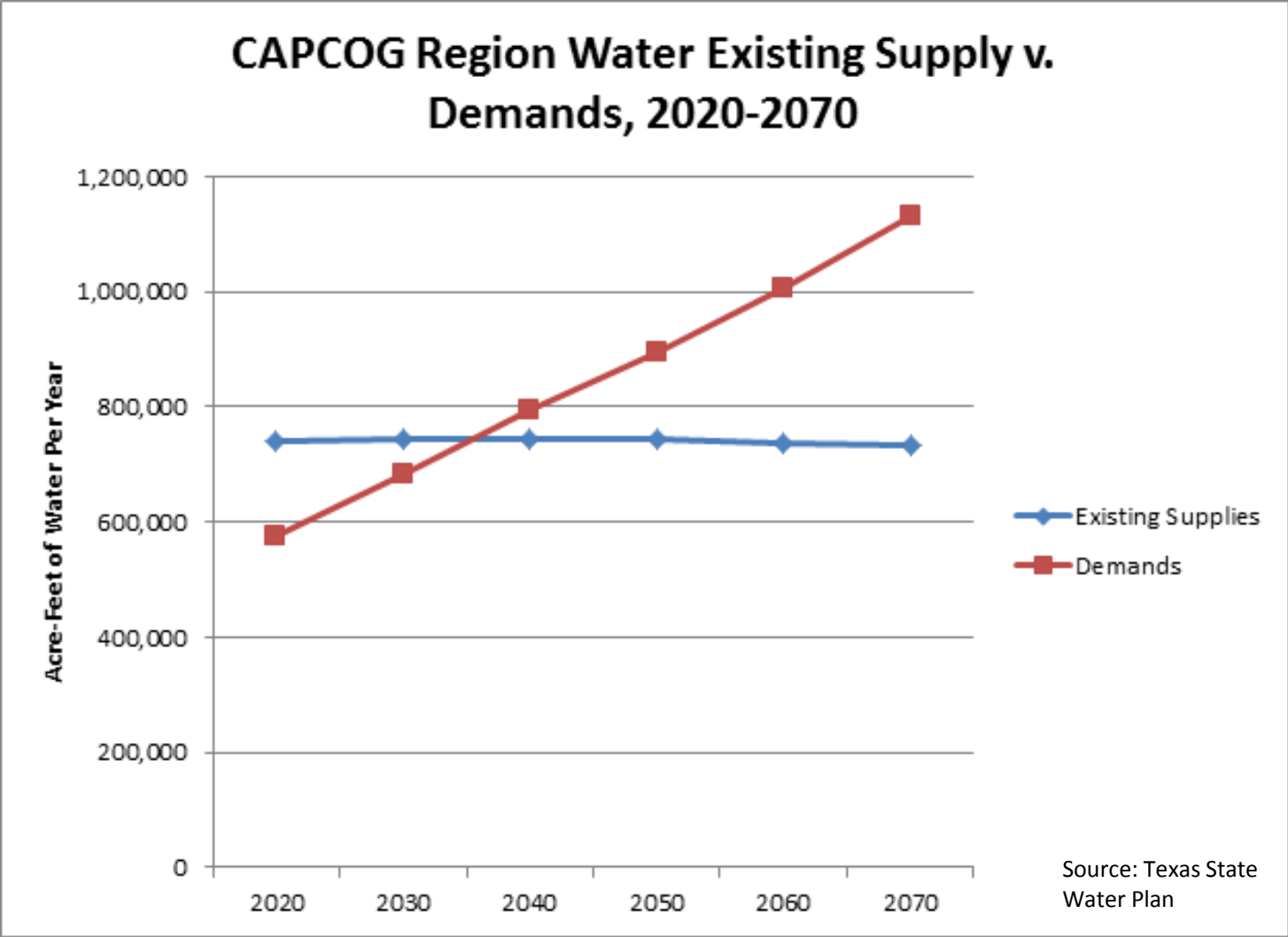
Cedar Season: The Primary Consideration for Air Quality
in the Capital Region



- Reality



Source: TCEQ

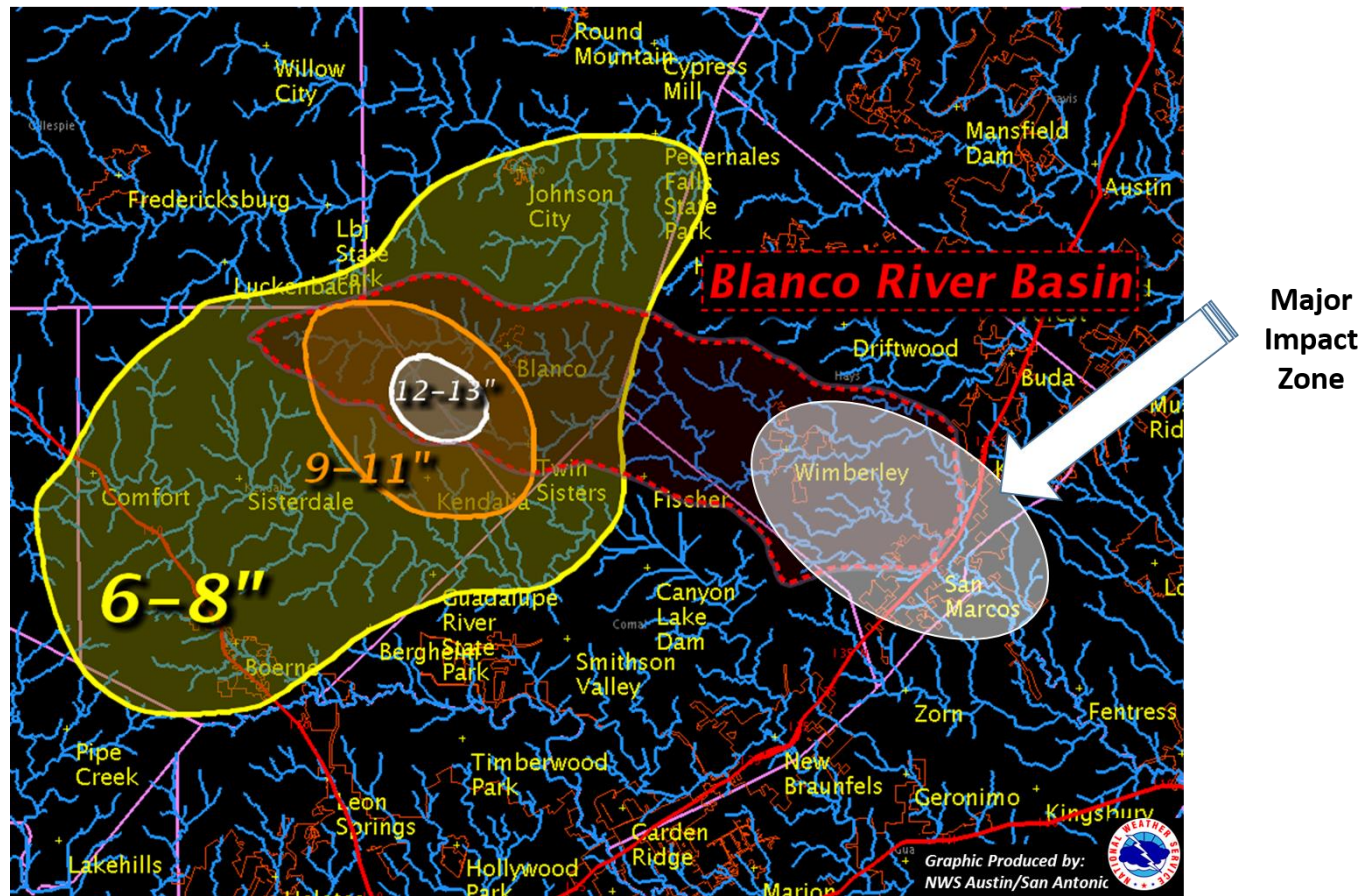


- No Longer the Popular Conception:

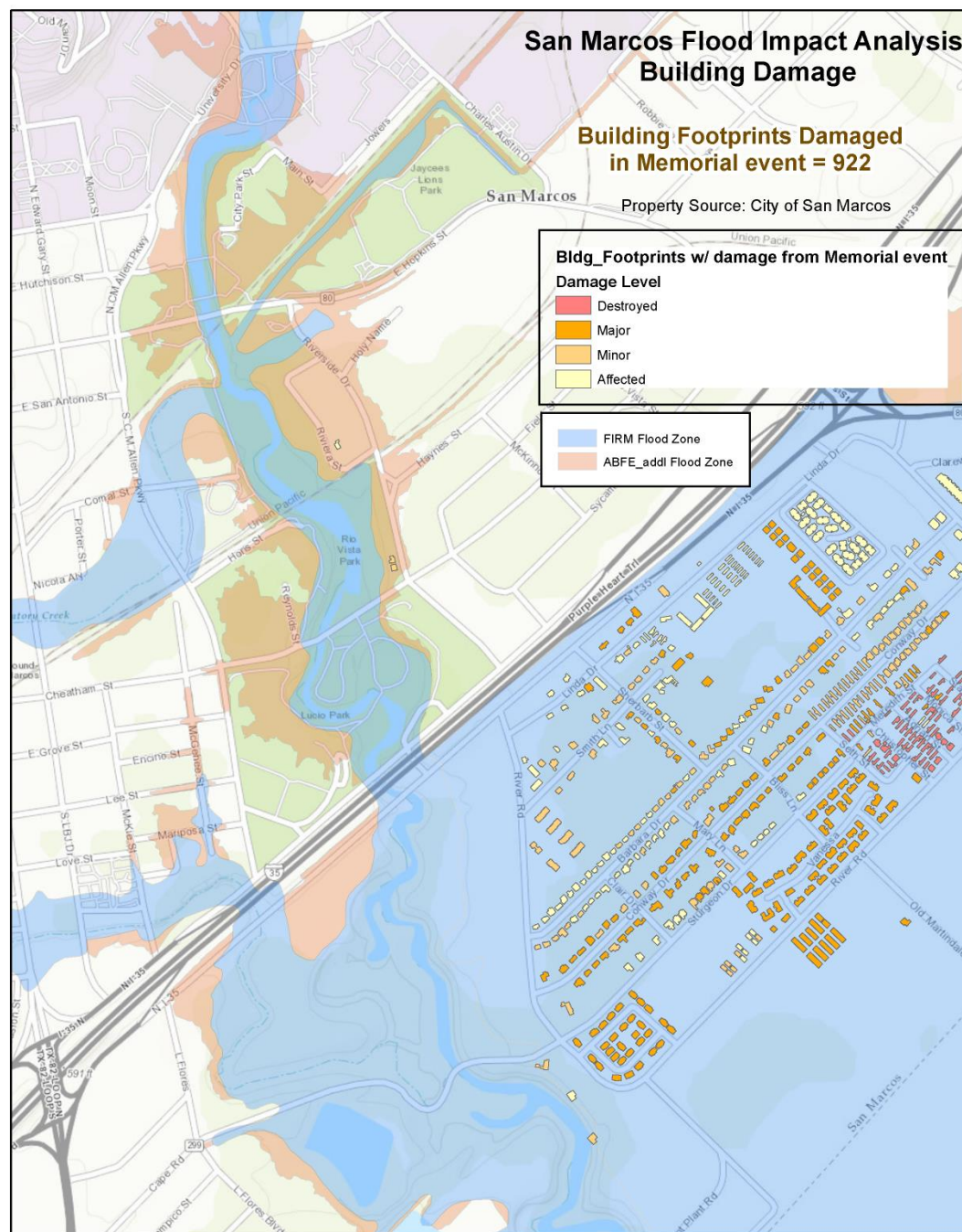
“A 100-year storm has a 1% chance of occurring in any given year.”

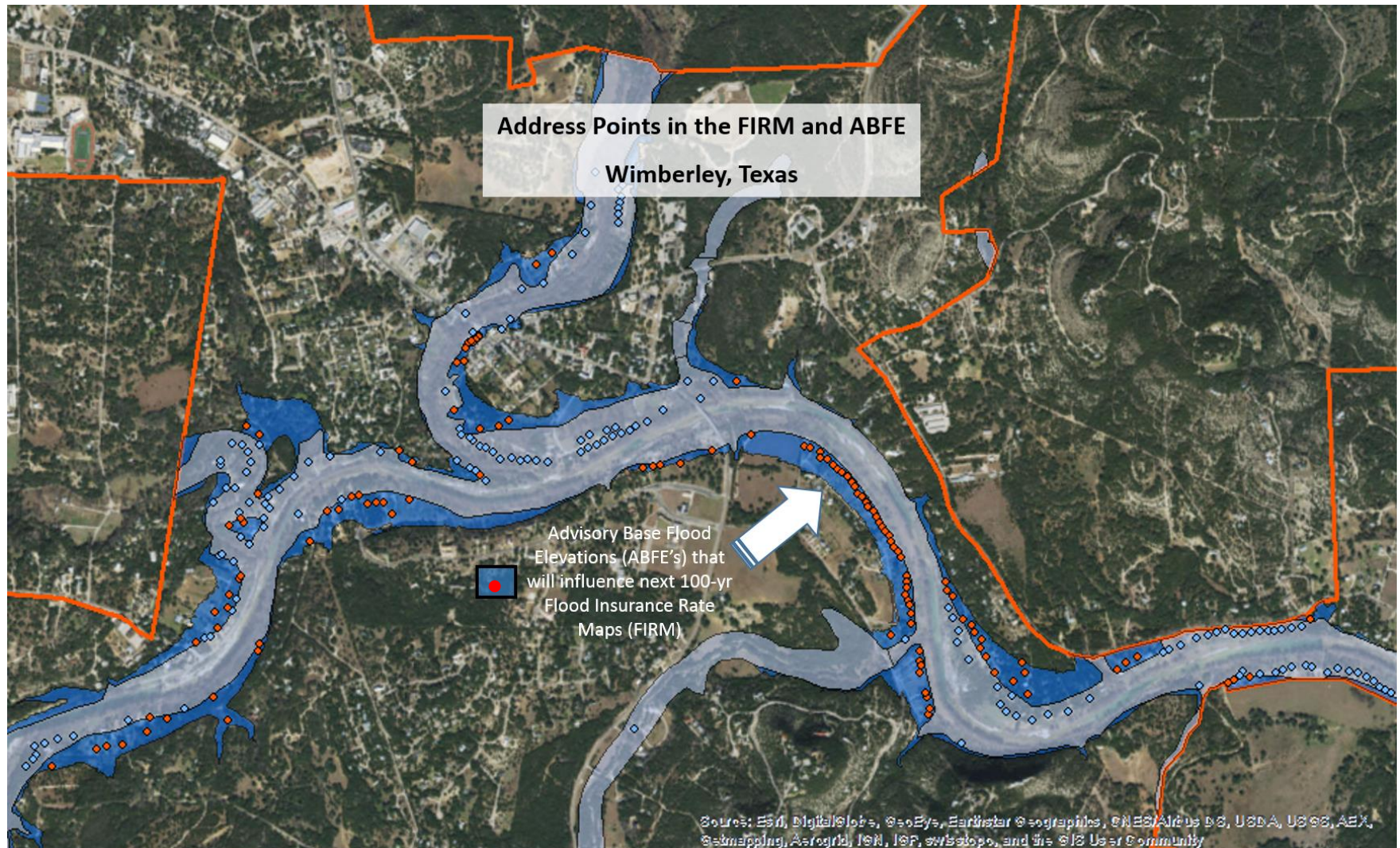
- Reality:

Memorial Weekend 2015 Flood Disaster



- Reality:





- Population Continues to Grow
- Job Growth is Strong, but Wages and Access are Uneven
- Transportation is... -_(\ツ)_/ -
- Development in Activity Centers is Mixed... but Not Necessarily Mixed Use
- Environmental Issues Haven't Disappeared
- Equity and Affordability Challenges Remain
- Disaster Resiliency

Thank you



Capital Area Council of Governments

www.capcog.org

Chris Schreck,

Director of Planning and Economic Development

CSchreck@capcog.org

512.916.6183