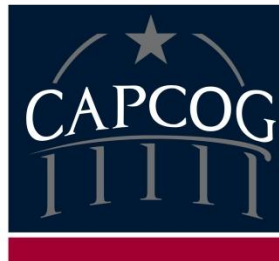


U.S. EDA: CARES ACT ECONOMIC ADJUSTMENT ASSISTANCE GRANT

May 14, 2020



CAPITAL AREA COUNCIL OF GOVERNMENTS

Program Announcement: May 7, 2020

FEMA Disaster Declaration: 4485

NOFO can be found here: <https://www.eda.gov/coronavirus/>

Eligible Applicants :

State, County, City

Political Subdivisions engaged in economic or infrastructure development

Institutions of Higher Education or a consortium of institutions: ISD's as well

Non-profit organizations acting in cooperation with officials of a political subdivision of a State.

CAPCOG is part of the “Austin Region” (AuRO) that is comprised of 5 states

Regional Funds: \$236M

Available through September 2022

Average Project award: \$2.5M



*This is an **economic development grant** different from TEDM, HUD, FEMA, DOJ-CESF or SBA. It does **NOT** reimburse pandemic related expenses for law enforcement or first responders.*

EDA-Economic Adjustment Assistance Funds do these types of things:

- Construction/Upgrade public infrastructure: Water, Wastewater, Roads, Buildings
- Infrastructure to support telehealth and remote learning for job skills (broadband);
- Construction of business incubators; Co-work Spaces; Training Centers
- Activities that support the creation of businesses and jobs, including economic diversification strategies;
- Entrepreneurial support programs
- Planning/Recovery strategies for industry contraction/expansion
- Workforce development/expansion

Does it create/retain jobs in the community OR improve economic resilience?

Project Details

Unprecedented eligibility

Average Grant Award: **\$2.5M**

Local match is 20%

In-kind: On a Case-By Case Basis

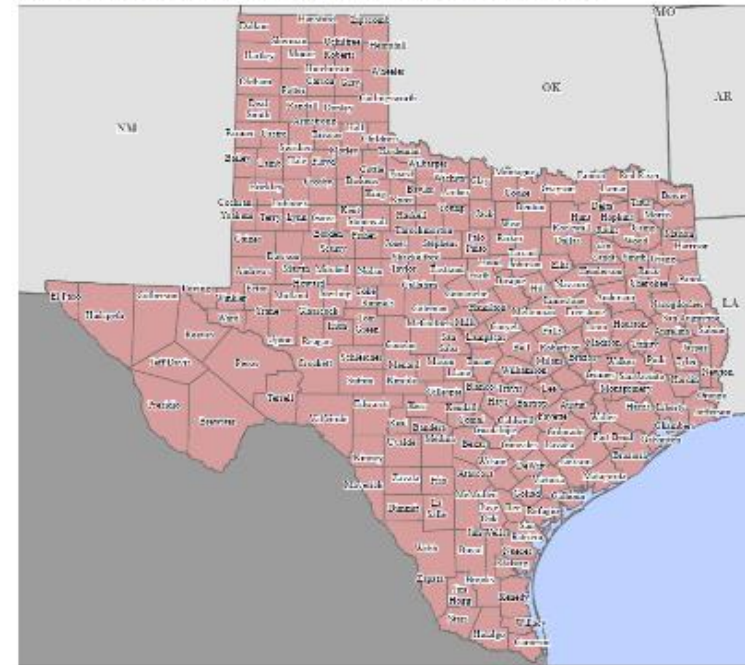
Grant funds as match: It Depends on the fund

Match funds must be available at time of application

Project must:

- Support 1 of EDA Investment Priorities
- Support 1 of the regional CEDS
- Have a disaster nexus

FEMA-4485-DR, Texas Disaster Declaration as of 03/25/2020



3 Must Haves

1. Support 1 of EDA's Investment Priorities:

<https://www.eda.gov/about/investment-priorities/>

Recovery & Resilience

Workforce Development & Manufacturing

Opportunity Zones

Critical Infrastructure

Exports & FDI

2. Align with one of the Regional CEDS Themes:

- ✓ Workforce Development
- ✓ Entrepreneurship
- ✓ Economic Resilience
- ✓ Place Building

3. Disaster Nexus:

Project application must explain the impact of the disaster on the community and how this project will improve the situation

Example:

- Project Pineapple will build the infrastructure to develop the municipal industrial park, which creates local industrial jobs with an average wage of \$80,000 and an addition of 60 local jobs to the community.

No deadlines; Rolling submittals

Funds available through Sept. 2022

Monthly project review and award announcements

Apply on the Grants.gov platform

Entity will need a DUNS/EIN Number

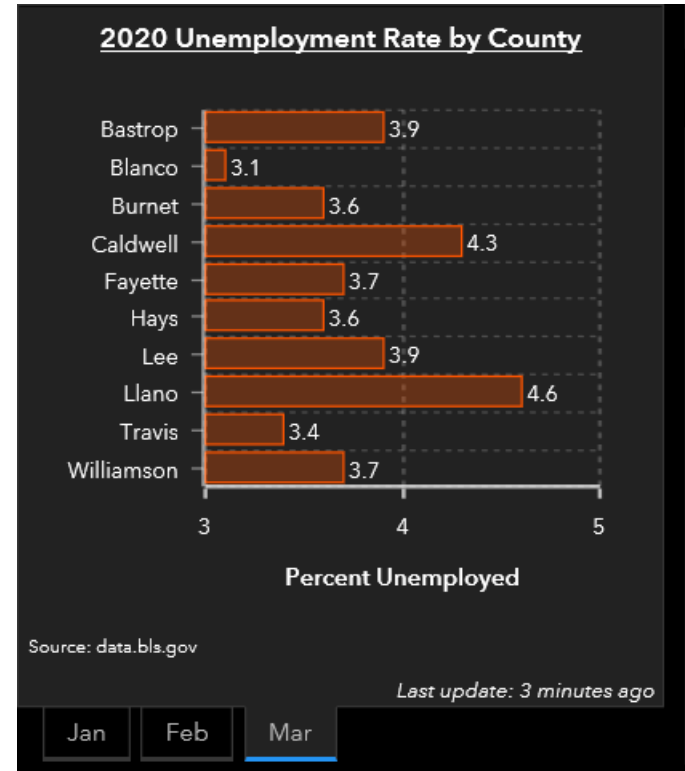
Multiple forms to this application

- Budgets
- Council Resolutions
- Letter of Available Funds
- PER and Environmental Narrative (Construction)

Previous recipients can apply

Documenting economic impacts is important

CAPCOG Regional Economic Dashboard can be accessed [HERE](#)



1. Freight Rail Improvements: Tulsa Oklahoma

\$1.1M award from EDA

\$1.1M match

Retains 730+ jobs

Needed upgrades to a critical rail crossing necessary to maintaining rail infrastructure at the Tulsa Port of Catoosa, Oklahoma

Announcement Details:

<https://www.inhofe.senate.gov/newsroom/press-releases/inhofe-applauds-11-million-grant-to-tulsa-port-of-catoosa>

2. Electrical Upgrades at a Public Utility District, Washington State

\$7.4M awarded from EDA

\$1.8M local match

Public Utility District No. 1 of Skamania County, Washington, to upgrade an electrical power substation to support the energy needs of commercial and industrial customers. Sustaining economic activity during and after natural disasters is a key factor in keeping our country resilient and strong. Additional power lines, distribution feeders, larger transformers, generators, and new voltage regulators will contribute to supporting the business needs of regional customers.

Announcement Details:

<https://www.eda.gov/news/press-releases/2020/02/06/skamania-county-wa.htm>

1. Coastal Maine: Development Strategy for Maine's marine economy

\$2M award from EDA

\$522,000 local match

Develop a strategic roadmap to strengthen Maine's marine living resources economy and improve resiliency against future natural disasters. Maine Technology Institute will implement strategies to strengthen the state's critical marine living resources economy by identifying new market opportunities and transportation mechanisms and by providing a stronger, more efficient workforce.

Announcement Details:

<https://www.eda.gov/news/press-releases/2020/04/08/brunswick-me.htm>

2. Boost Agriculture and Tourism in Hardwick, Vermont

\$3M awarded from EDA

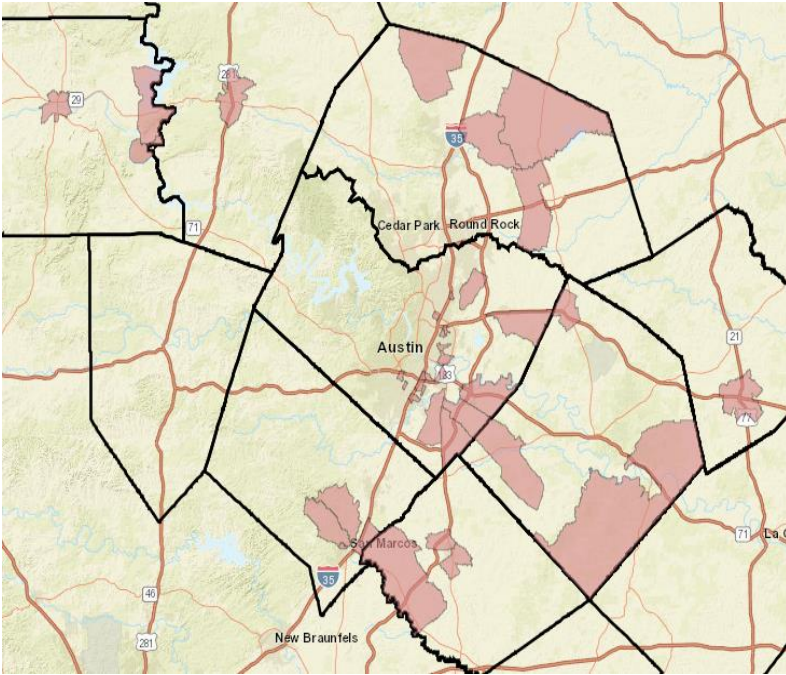
\$4.8M local match

Restore the historic Yellow Barn Accelerator facility and construct a new building for the local agricultural and forestry industries. Funds will build critical infrastructure, such as parking, commercial loading, and utilities, needed to support tenants working to bring Vermont products to market. Provide opportunities to leverage the emerging food tourism sector and will be matched with \$4.8 million in state and local funds.

Announcement Details:

<https://www.eda.gov/news/press-releases/2020/04/06/hardwick-vt.htm>

Example: Opportunity Zones



**CAPCOG
Opportunity Zones**

1. Levee Improvement Williamsport, PA Opportunity Zone

\$5.6M award from EDA

\$1.4M match

Creates 240 Jobs/Retains 1,300 jobs

Prevent flooding by repairing a structurally unsound I-wall located within the Northeast levee in Williamsport opportunity zone.

Announcement Details:

<https://www.eda.gov/news/press-releases/2020/02/24/williamsport-pa.htm>

2. South Carolina Opportunity Zone

\$15.6M awarded from EDA

\$3.9M local match

Expand/improve the city's wastewater treatment plant by providing the vital infrastructure needed to sustain the region's long-term economy. The new facility will serve existing and new businesses in the region and protect against damage from future severe weather.

Announcement Details:
<https://www.eda.gov/news/press-releases/2020/04/02/walterboro-sc.htm>

Projects can be based on Local-County-Regional Level

Local/County Projects:

Identify planned projects that may impact jobs, businesses, commercial development.

Regional:

Coordinate with other eligible partners develop and apply for a project that will benefit a larger target area and be responsive to a larger issue.

RESOURCES:

EDA Investment Priorities: [HERE](#)

CAPCOG CEDS Document: [HERE](#)

CAPCOG Economic Dashboard: [HERE](#)

CAPCOG Website: <https://www.capcog.org/events/eda-cares-act-webinar/>

CAPCOG Staff is trained to provide technical assistance, project development and grant administration on EDA proposals and projects. Contact the COG for assistance and questions.

EDA Questions:

Rachel Steele

Director, Community and Economic Development

Capital Area Council of Governments

rsteele@capcog.org

Phone: 512-916-6039

CESF Questions:

Matt Holderread

Regional Research Coordinator

Capital Area Council of Governments

mholderread@capcog.org

Phone: 512-916-6185

CESF RFA <https://egrants.gov.texas.gov/fundopp.aspx>